

2012 Florida PSA Profiles

PSA 1

Population by Age Category		
All Ages	699,146	100.0%
Under 60	555,048	79.4%
60+	144,098	20.6%
65+	102,684	14.7%
70+	69,244	9.9%
75+	43,817	6.3%
80+	24,860	3.6%
85+	11,344	1.6%

Population by Race (60+)		
White	123,396	85.6%
Non-White	20,702	14.4%
Black	13,443	9.3%
Other Minorities	7,259	5.0%

Population by Ethnicity (60+)		
Total Hispanic	2,731	1.9%
White	1,599	1.1%
Non-White	1,132	0.8%
Total Non-Hispanic	141,367	98.1%
Total Minorities*	22,301	15.5%

Population by Gender (60+)		
Male	66,219	46.0%
Female	77,879	54.0%

Financial Status (60+, % 60+)		
Below Poverty Guideline	11,949	8.3%
Below 125% of Poverty Guideline	17,472	12.1%
Minorities Below Poverty Guideline	3,813	2.6%
Minorities Below 125% of Poverty Guideline	5,275	3.7%

Medically Underserved (65+)	
Total Medically Underserved	23,109
Medically Underserved Populations - Living in Areas Defined as Having Medically Underserved Populations	13,341
Medically Underserved Areas - Living in Medically Underserved Areas	9,768

Living Situation (60+)	
Living Alone	32,881

Grandparents (60+)	
Total 60+ Living With Own Grandchildren (Under Age 18)	7,325
Grandparent Responsible for Own Grandchildren (Under Age 18)	2,983
Grandparent Not Responsible for Own Grandchildren (Under Age 18)	4,337
60+ Not Living With Own Grandchildren (Under Age 18)	133,682

Skilled Nursing Facility Utilization	
SNF Beds	3,309
Community Beds	3,274
Sheltered Beds	35
Veterans Administration Beds	0
Other Beds	0
SNFs With Beds	28
Community Beds	27
Sheltered Beds	1
Veterans Administration Beds	0
Other Beds	0
SNFs With Community Beds	27
Community Bed Days	1,198,284
Community Patient Days	1,046,563
Medicaid Patient Days	653,036
Occupancy Rate	87.3%
Percent Medicaid	62.4%

Adult Day Care	
Facilities	5
Capacity	134

Adult Family Care Homes	
Homes	8
Beds	34

Home Health Agencies	
Agencies	43
Medicaid Certified Agencies	10
Medicare Certified Agencies	29

Homemaker & Companion Service Companies	
Companies	42

Ambulatory Surgical Centers	
Facilities	14
Operating Rooms	47
Recovery Beds	127

*Total Minorities = (60+ Population) – (White Non-Hispanic 60+)

2012 Florida PSA Profiles

PSA 1 (Continued)

Rural Designation	
Rural (Yes/No)	0

Assisted Living Facilities	
Total Beds	2,381
OSS Beds**	503
Non-OSS Beds	1,878
Total Facilities	41
Facilities With ECC License***	12
Facilities With LMH License****	8
Facilities With LNS License*****	27

Hospitals	
Hospitals	15
Hospitals With Skilled Nursing Units	0
Hospital Beds	2,452
Skilled Nursing Unit Beds	0

Medical Professionals	
Medical Doctors	
Licensed	2,032
Limited License	6
Critical Need Area License	4
Restricted	0
Medical Faculty Certificate	0
Public Health Certificate	0
Specialties	
Licensed Podiatric Physicians	54
Licensed Osteopathic Physicians	199
Licensed Chiropractic Physicians	220
Registered Nurses	
Licensed Registered Nurses	11,093

Driver's License	
Drivers With Florida Driver's License - All Ages	801,746
Drivers With Florida Driver's License - Age 60+	188,588
Percent of Drivers With Florida Driver's License - Age 60+	23.5%

Food Stamps (60+)	
Participants (60+)	7,360
Potentially Eligible	17,472
Food Stamp Participation Rate (60+)	42.1%

Registered Voters	
Registered to Vote in Florida - All Ages	482,767
Registered to Vote in Florida - Age 60+	141,749
Percent of Population Registered to Vote in Florida - Age 60+	29.4%

Households With Cost Burden Above 30% and Income Below 50% Area Median Income (65+) (2010)	
Elder Households	69,750
Percent of All Households	14.0%

Median Household Income (All Ages)	
2007-2011	\$52,142

Medicaid & Medicare Eligibility	
Medicaid Eligible - All Ages	113,975
Medicaid Eligible - 60+	12,725
Dual Eligible - All Ages	19,891
Dual Eligible - 60+	11,316

Veterans	
Total	101,505
Age 45-64	40,562
Age 65-84	26,874
Age 85+	4,557

Disability Status (60+)	
With One Type of Disability*****	22,789
Hearing	19,063
Vision	8,480
Cognitive	11,434
Ambulatory	33,127
Self-Care	10,600
Independent Living	19,363
With Two or More Disabilities	26,001
With No Disabilities	96,286
Probable Alzheimer's Cases*****	11,369

English Proficiency (60+)	
With Limited English Proficiency	1,612

** OSS beds: Optional State Supplementation beds

*** ECC License: Extended Congregate Care License

****LMH License: Limited Mental Health License

*****LNS License: Limited Nursing Services License

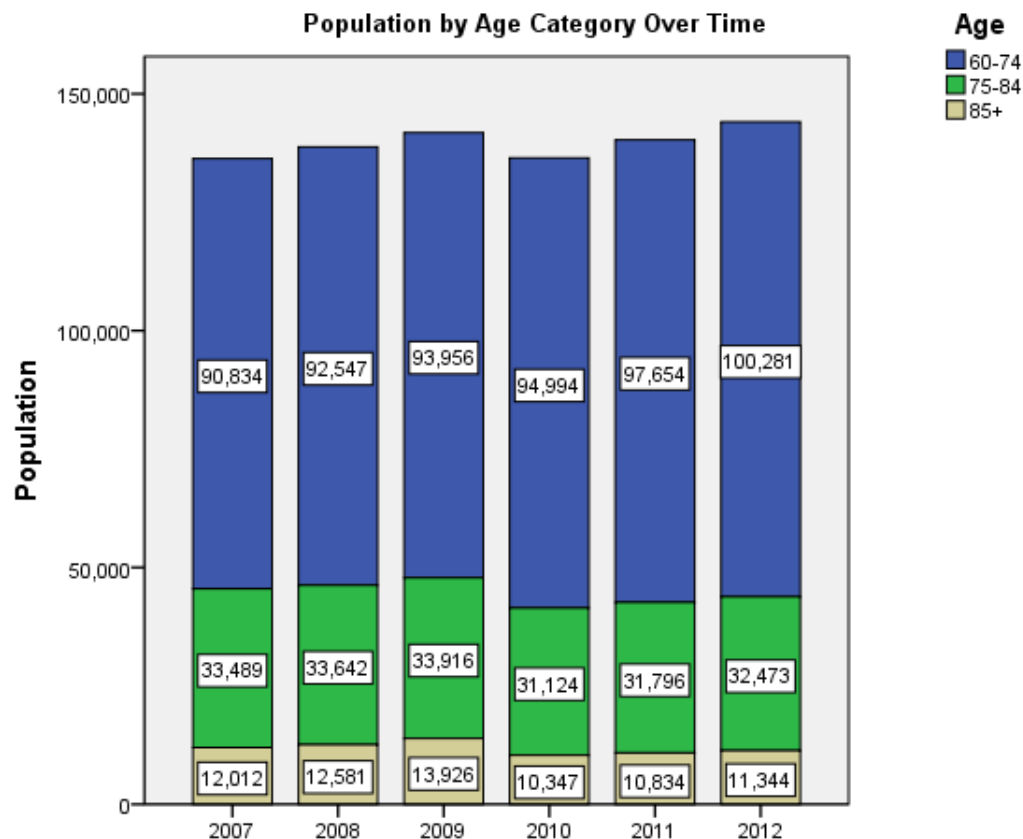
*****With One Type of Disability: 65+ people who have only one type of disability

***** Probable Alzheimer's Cases = (65-74 Population x 0.0136) + (75-84 Population x 0.1822) + (85+population x 0.4098)

2012 Florida PSA Profiles

PSA 1 (Continued)

Cost of Living	
	Annual Expenses*
Single Elders	
Owner without Mortgage	\$19,452
Renter, one bedroom	\$23,505
Owner with Mortgage	\$28,443
Elder Couple	
Owner without Mortgage	\$31,410
Renter, one bedroom	\$35,463
Owner with Mortgage	\$40,401
* Annual expenses include: housing, including utilities, taxes, insurance; food; transportation; health care, based on good health; and miscellaneous.	
Note: Wider Opportunities for Women Elder Economic Security Standard™ Index (Elder Index) measures the incomes workers and retired elders need to achieve economic security. Data as of March 2013.	





2012 Florida PSA Profiles

PSA 1 (Continued)

Sources

- Population: Florida Population by County, Age, Race, Ethnicity and Gender provided by Florida Legislature, Office of Economic and Demographic Research
- Financial Status & Living Situation: Department of Elder Affairs calculations based on Florida Population data and 2007-2011 American Community Survey
- Medically Underserved Population: Florida Department of Health
- Grandparents: Department of Elder Affairs calculations based on Florida Population data and 2007-2011 American Community Survey, Special Tabulation on Aging
- Skilled Nursing Facility Utilization, Adult Day Care, Adult Family Care Home, Ambulatory Surgical Centers, Assisted Living Facilities, Home Health Agencies, Homemakers & Companion Service Companies, Hospitals: Florida Agency for Health Care Administration
- Rural Designation: Based on the definition of Rural Designation by Rural Economic Development Initiative
- Medical Professionals: Florida Department of Health
- Driver's License: Florida Department of Highway Safety & Motor Vehicles
- Food Stamps: Florida Department of Children and Families
- Registered Voters (Data as of 2/28/2013) : Florida Department of State
- Households with Cost Burden Above 30% and income below 50% Area Median Income: The Shimberg Center for Housing Studies
- Median Household Incomes: U.S. Census Bureau: State and County QuickFacts
- Medicaid & Medicare Eligibility and Medicaid Eligibility: Florida Agency for Health Care Administration
- Veterans Demographics: Florida Department of Veterans' Affairs
- Disability Status: Department of Elder Affairs calculations based on Florida Population data and 2009-2011 American Community Survey Data
- DOEA Calculation based on the 2012 Population and Alzheimer's by Age in 2011 Alzheimer's Disease Facts and Figures report at http://www.alz.org/documents_custom/Facts_2011/ALZ_FL.pdf?type=interior_map&facts=undefined&facts=facts
- English Proficiency: 2007-2011 American Community Survey, Special Tabulation on Aging
- Cost of Living: Wider Opportunities for Women Elder Economic Security Standard™ Index (Elder Index) at <http://www.basiceconomicsecurity.org/EI/>



2012 Florida PSA Profiles

PSA 2

Population by Age Category		
All Ages	727,292	100.0%
Under 60	587,602	80.8%
60+	139,690	19.2%
65+	97,682	13.4%
70+	64,709	8.9%
75+	40,813	5.6%
80+	23,924	3.3%
85+	11,243	1.5%

Population by Race (60+)		
White	113,839	81.5%
Non-White	25,851	18.5%
Black	21,980	15.7%
Other Minorities	3,871	2.8%

Population by Ethnicity (60+)		
Total Hispanic	2,385	1.7%
White	1,445	1.0%
Non-White	940	0.7%
Total Non-Hispanic	137,305	98.3%
Total Minorities*	27,296	19.5%

Population by Gender (60+)		
Male	64,236	46.0%
Female	75,454	54.0%

Financial Status (60+, % 60+)		
Below Poverty Guideline	14,361	10.3%
Below 125% of Poverty Guideline	21,358	15.3%
Minorities Below Poverty Guideline	5,011	3.6%
Minorities Below 125% of Poverty Guideline	7,440	5.3%

Medically Underserved (65+)	
Total Medically Underserved	52,818
Medically Underserved Populations - Living in Areas Defined as Having Medically Underserved Populations	16,184
Medically Underserved Areas - Living in Medically Underserved Areas	36,634

Living Situation (60+)	
Living Alone	34,005

Grandparents (60+)	
Total 60+ Living With Own Grandchildren (Under Age 18)	6,206
Grandparent Responsible for Own Grandchildren (Under Age 18)	2,709
Grandparent Not Responsible for Own Grandchildren (Under Age 18)	3,485
60+ Not Living With Own Grandchildren (Under Age 18)	128,633

Skilled Nursing Facility Utilization	
SNF Beds	3,901
Community Beds	3,709
Sheltered Beds	72
Veterans Administration Beds	120
Other Beds	0
SNFs With Beds	34
Community Beds	32
Sheltered Beds	1
Veterans Administration Beds	1
Other Beds	0
SNFs With Community Beds	32
Community Bed Days	1,357,494
Community Patient Days	1,202,557
Medicaid Patient Days	845,537
Occupancy Rate	88.6%
Percent Medicaid	70.3%

Adult Day Care	
Facilities	2
Capacity	84

Adult Family Care Homes	
Homes	7
Beds	32

Home Health Agencies	
Agencies	48
Medicaid Certified Agencies	17
Medicare Certified Agencies	31

Homemaker & Companion Service Companies	
Companies	69

Ambulatory Surgical Centers	
Facilities	18
Operating Rooms	41
Recovery Beds	127

*Total Minorities = (60+ Population) – (White Non-Hispanic 60+)

2012 Florida PSA Profiles

PSA 2 (Continued)

Rural Designation	
Rural (Yes/No)	0

Assisted Living Facilities	
Total Beds	1,529
OSS Beds**	632
Non-OSS Beds	897
Total Facilities	41
Facilities With ECC License***	11
Facilities With LMH License****	20
Facilities With LNS License*****	19

Hospitals	
Hospitals	21
Hospitals With Skilled Nursing Units	2
Hospital Beds	3,434
Skilled Nursing Unit Beds	147

Medical Professionals	
Medical Doctors	
Licensed	1,210
Limited License	3
Critical Need Area License	19
Restricted	0
Medical Faculty Certificate	0
Public Health Certificate	0
Specialties	
Licensed Podiatric Physicians	23
Licensed Osteopathic Physicians	75
Licensed Chiropractic Physicians	101
Registered Nurses	
Licensed Registered Nurses	6,773

Driver's License	
Drivers With Florida Driver's License - All Ages	532,364
Drivers With Florida Driver's License - Age 60+	131,697
Percent of Drivers With Florida Driver's License - Age 60+	24.7%

Food Stamps (60+)	
Participants (60+)	9,849
Potentially Eligible	21,358
Food Stamp Participation Rate (60+)	46.1%

Registered Voters	
Registered to Vote in Florida - All Ages	467,848
Registered to Vote in Florida - Age 60+	132,394
Percent of Population Registered to Vote in Florida - Age 60+	28.3%

Households With Cost Burden Above 30% and Income Below 50% Area Median Income (65+) (2010)	
Elder Households	64,089
Percent of All Households	16.8%

Median Household Income (All Ages)	
2007-2011	\$42,201

Medicaid & Medicare Eligibility	
Medicaid Eligible - All Ages	129,672
Medicaid Eligible - 60+	16,750
Dual Eligible - All Ages	24,156
Dual Eligible - 60+	14,944

Veterans	
Total	67,913
Age 45-64	28,458
Age 65-84	21,322
Age 85+	3,684

Disability Status (60+)	
With One Type of Disability*****	16,701
Hearing	15,235
Vision	6,578
Cognitive	10,242
Ambulatory	25,053
Self-Care	8,526
Independent Living	14,823
With Two or More Disabilities	21,274
With No Disabilities	77,876
Probable Alzheimer's Cases*****	10,771

English Proficiency (60+)	
With Limited English Proficiency	1,352

** OSS beds: Optional State Supplementation beds

*** ECC License: Extended Congregate Care License

****LMH License: Limited Mental Health License

*****LNS License: Limited Nursing Services License

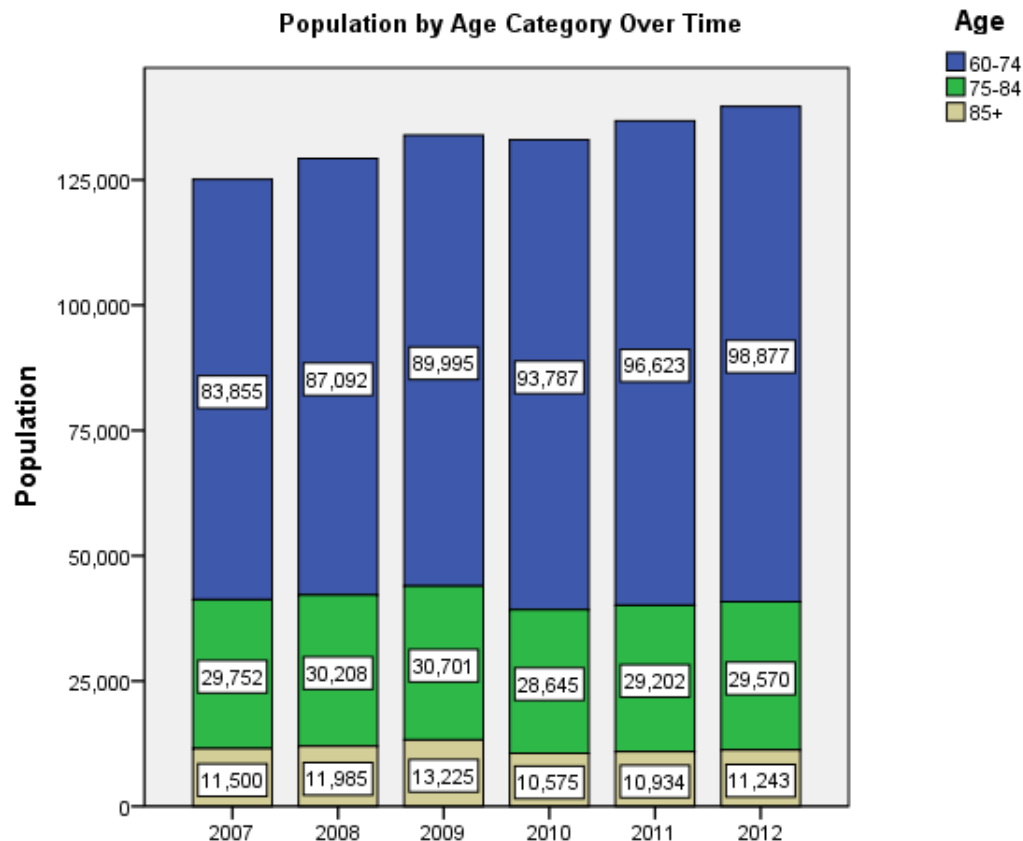
*****With One Type of Disability: 65+ people who have only one type of disability

***** Probable Alzheimer's Cases = (65-74 Population x 0.0136) + (75-84 Population x 0.1822) + (85+population x 0.4098)

2012 Florida PSA Profiles

PSA 2 (Continued)

Cost of Living	
	Annual Expenses*
Single Elders	
Owner without Mortgage	\$18,377
Renter, one bedroom	\$21,699
Owner with Mortgage	\$26,766
Elder Couple	
Owner without Mortgage	\$29,745
Renter, one bedroom	\$33,067
Owner with Mortgage	\$38,133
* Annual expenses include: housing, including utilities, taxes, insurance; food; transportation; health care, based on good health; and miscellaneous.	
Note: Wider Opportunities for Women Elder Economic Security Standard™ Index (Elder Index) measures the incomes workers and retired elders need to achieve economic security. Data as of March 2013.	





2012 Florida PSA Profiles

PSA 2 (Continued)

Sources

- Population: Florida Population by County, Age, Race, Ethnicity and Gender provided by Florida Legislature, Office of Economic and Demographic Research
- Financial Status & Living Situation: Department of Elder Affairs calculations based on Florida Population data and 2007-2011 American Community Survey
- Medically Underserved Population: Florida Department of Health
- Grandparents: Department of Elder Affairs calculations based on Florida Population data and 2007-2011 American Community Survey, Special Tabulation on Aging
- Skilled Nursing Facility Utilization, Adult Day Care, Adult Family Care Home, Ambulatory Surgical Centers, Assisted Living Facilities, Home Health Agencies, Homemakers & Companion Service Companies, Hospitals: Florida Agency for Health Care Administration
- Rural Designation: Based on the definition of Rural Designation by Rural Economic Development Initiative
- Medical Professionals: Florida Department of Health
- Driver's License: Florida Department of Highway Safety & Motor Vehicles
- Food Stamps: Florida Department of Children and Families
- Registered Voters (Data as of 2/28/2013) : Florida Department of State
- Households with Cost Burden Above 30% and income below 50% Area Median Income: The Shimberg Center for Housing Studies
- Median Household Incomes: U.S. Census Bureau: State and County QuickFacts
- Medicaid & Medicare Eligibility and Medicaid Eligibility: Florida Agency for Health Care Administration
- Veterans Demographics: Florida Department of Veterans' Affairs
- Disability Status: Department of Elder Affairs calculations based on Florida Population data and 2009-2011 American Community Survey Data
- DOEA Calculation based on the 2012 Population and Alzheimer's by Age in 2011 Alzheimer's Disease Facts and Figures report at http://www.alz.org/documents_custom/Facts_2011/ALZ_FL.pdf?type=interior_map&facts=undefined&facts=facts
- English Proficiency: 2007-2011 American Community Survey, Special Tabulation on Aging
- Cost of Living: Wider Opportunities for Women Elder Economic Security Standard™ Index (Elder Index) at <http://www.basiceconomicsecurity.org/EI/>



2012 Florida PSA Profiles

PSA 3

Population by Age Category		
All Ages	1,618,013	100.0%
Under 60	1,119,912	69.2%
60+	498,101	30.8%
65+	380,729	23.5%
70+	264,069	16.3%
75+	166,443	10.3%
80+	95,033	5.9%
85+	42,902	2.7%

Population by Race (60+)		
White	456,358	91.6%
Non-White	41,743	8.4%
Black	29,111	5.8%
Other Minorities	12,632	2.5%

Population by Ethnicity (60+)		
Total Hispanic	19,094	3.8%
White	12,566	2.5%
Non-White	6,528	1.3%
Total Non-Hispanic	479,007	96.2%
Total Minorities*	54,309	10.9%

Population by Gender (60+)		
Male	230,539	46.3%
Female	267,562	53.7%

Financial Status (60+, % 60+)		
Below Poverty Guideline	42,138	8.5%
Below 125% of Poverty Guideline	65,171	13.1%
Minorities Below Poverty Guideline	8,693	1.7%
Minorities Below 125% of Poverty Guideline	12,898	2.6%

Medically Underserved (65+)	
Total Medically Underserved	152,180
Medically Underserved Populations - Living in Areas Defined as Having Medically Underserved Populations	118,895
Medically Underserved Areas - Living in Medically Underserved Areas	33,285

Living Situation (60+)	
Living Alone	103,870

Grandparents (60+)	
Total 60+ Living With Own Grandchildren (Under Age 18)	16,533
Grandparent Responsible for Own Grandchildren (Under Age 18)	5,575
Grandparent Not Responsible for Own Grandchildren (Under Age 18)	10,947
60+ Not Living With Own Grandchildren (Under Age 18)	471,639

Skilled Nursing Facility Utilization	
SNF Beds	7,622
Community Beds	7,498
Sheltered Beds	124
Veterans Administration Beds	0
Other Beds	0
SNFs With Beds	64
Community Beds	61
Sheltered Beds	3
Veterans Administration Beds	0
Other Beds	0
SNFs With Community Beds	61
Community Bed Days	2,762,568
Community Patient Days	2,446,376
Medicaid Patient Days	1,520,707
Occupancy Rate	88.6%
Percent Medicaid	62.2%

Adult Day Care	
Facilities	8
Capacity	1,315

Adult Family Care Homes	
Homes	36
Beds	166

Home Health Agencies	
Agencies	150
Medicaid Certified Agencies	31
Medicare Certified Agencies	111

Homemaker & Companion Service Companies	
Companies	197

Ambulatory Surgical Centers	
Facilities	39
Operating Rooms	87
Recovery Beds	277

*Total Minorities = (60+ Population) – (White Non-Hispanic 60+)

2012 Florida PSA Profiles

PSA 3 (Continued)

Rural Designation	
Rural (Yes/No)	0

Assisted Living Facilities	
Total Beds	5,472
OSS Beds**	568
Non-OSS Beds	4,904
Total Facilities	139
Facilities With ECC License***	28
Facilities With LMH License****	24
Facilities With LNS License*****	44

Hospitals	
Hospitals	33
Hospitals With Skilled Nursing Units	0
Hospital Beds	4,571
Skilled Nursing Unit Beds	0

Medical Professionals	
Medical Doctors	
Licensed	3,498
Limited License	6
Critical Need Area License	43
Restricted	0
Medical Faculty Certificate	3
Public Health Certificate	0
Specialties	
Licensed Podiatric Physicians	74
Licensed Osteopathic Physicians	281
Licensed Chiropractic Physicians	340
Registered Nurses	
Licensed Registered Nurses	18,960

Driver's License	
Drivers With Florida Driver's License - All Ages	1,288,819
Drivers With Florida Driver's License - Age 60+	477,764
Percent of Drivers With Florida Driver's License - Age 60+	37.1%

Food Stamps (60+)	
Participants (60+)	27,002
Potentially Eligible	65,171
Food Stamp Participation Rate (60+)	41.4%

Registered Voters	
Registered to Vote in Florida - All Ages	1,074,346
Registered to Vote in Florida - Age 60+	461,377
Percent of Population Registered to Vote in Florida - Age 60+	42.9%

Households With Cost Burden Above 30% and Income Below 50% Area Median Income (65+) (2010)	
Elder Households	235,686
Percent of All Households	12.4%

Median Household Income (All Ages)	
2007-2011	\$43,539

Medicaid & Medicare Eligibility	
Medicaid Eligible - All Ages	295,698
Medicaid Eligible - 60+	40,580
Dual Eligible - All Ages	58,650
Dual Eligible - 60+	36,740

Veterans	
Total	193,150
Age 45-64	61,576
Age 65-84	88,639
Age 85+	16,370

Disability Status (60+)	
With One Type of Disability*****	75,768
Hearing	65,177
Vision	26,825
Cognitive	36,234
Ambulatory	96,013
Self-Care	30,712
Independent Living	55,404
With Two or More Disabilities	77,034
With No Disabilities	336,364
Probable Alzheimer's Cases*****	43,015

English Proficiency (60+)	
With Limited English Proficiency	7,005

** OSS beds: Optional State Supplementation beds

*** ECC License: Extended Congregate Care License

****LMH License: Limited Mental Health License

*****LNS License: Limited Nursing Services License

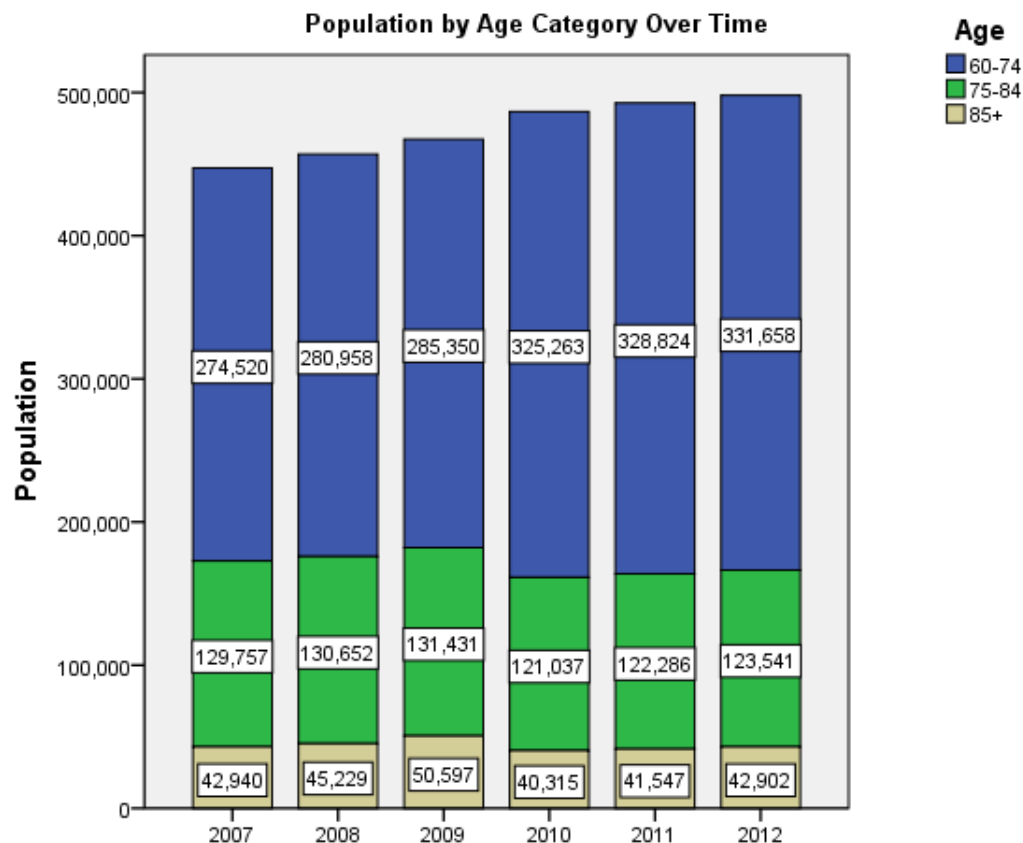
*****With One Type of Disability: 65+ people who have only one type of disability

***** Probable Alzheimer's Cases = (65-74 Population x 0.0136) + (75-84 Population x 0.1822) + (85+population x 0.4098)

2012 Florida PSA Profiles

PSA 3 (Continued)

Cost of Living	
	Annual Expenses*
Single Elders	
Owner without Mortgage	\$18,298
Renter, one bedroom	\$21,737
Owner with Mortgage	\$26,183
Elder Couple	
Owner without Mortgage	\$29,565
Renter, one bedroom	\$33,004
Owner with Mortgage	\$37,450
* Annual expenses include: housing, including utilities, taxes, insurance; food; transportation; health care, based on good health; and miscellaneous.	
Note: Wider Opportunities for Women Elder Economic Security Standard™ Index (Elder Index) measures the incomes workers and retired elders need to achieve economic security. Data as of March 2013.	





2012 Florida PSA Profiles

PSA 3 (Continued)

Sources

- Population: Florida Population by County, Age, Race, Ethnicity and Gender provided by Florida Legislature, Office of Economic and Demographic Research
- Financial Status & Living Situation: Department of Elder Affairs calculations based on Florida Population data and 2007-2011 American Community Survey
- Medically Underserved Population: Florida Department of Health
- Grandparents: Department of Elder Affairs calculations based on Florida Population data and 2007-2011 American Community Survey, Special Tabulation on Aging
- Skilled Nursing Facility Utilization, Adult Day Care, Adult Family Care Home, Ambulatory Surgical Centers, Assisted Living Facilities, Home Health Agencies, Homemakers & Companion Service Companies, Hospitals: Florida Agency for Health Care Administration
- Rural Designation: Based on the definition of Rural Designation by Rural Economic Development Initiative
- Medical Professionals: Florida Department of Health
- Driver's License: Florida Department of Highway Safety & Motor Vehicles
- Food Stamps: Florida Department of Children and Families
- Registered Voters (Data as of 2/28/2013) : Florida Department of State
- Households with Cost Burden Above 30% and income below 50% Area Median Income: The Shimberg Center for Housing Studies
- Median Household Incomes: U.S. Census Bureau: State and County QuickFacts
- Medicaid & Medicare Eligibility and Medicaid Eligibility: Florida Agency for Health Care Administration
- Veterans Demographics: Florida Department of Veterans' Affairs
- Disability Status: Department of Elder Affairs calculations based on Florida Population data and 2009-2011 American Community Survey Data
- DOEA Calculation based on the 2012 Population and Alzheimer's by Age in 2011 Alzheimer's Disease Facts and Figures report at http://www.alz.org/documents_custom/Facts_2011/ALZ_FL.pdf?type=interior_map&facts=undefined&facts=facts
- English Proficiency: 2007-2011 American Community Survey, Special Tabulation on Aging
- Cost of Living: Wider Opportunities for Women Elder Economic Security Standard™ Index (Elder Index) at <http://www.basiceconomicsecurity.org/EI/>

2012 Florida PSA Profiles

PSA 4

Population by Age Category		
All Ages	1,952,859	100.0%
Under 60	1,522,897	78.0%
60+	429,962	22.0%
65+	307,248	15.7%
70+	207,784	10.6%
75+	134,458	6.9%
80+	80,852	4.1%
85+	38,849	2.0%

Population by Race (60+)		
White	363,837	84.6%
Non-White	66,125	15.4%
Black	47,313	11.0%
Other Minorities	18,812	4.4%

Population by Ethnicity (60+)		
Total Hispanic	18,278	4.3%
White	11,514	2.7%
Non-White	6,764	1.6%
Total Non-Hispanic	411,684	95.7%
Total Minorities*	77,639	18.1%

Population by Gender (60+)		
Male	194,857	45.3%
Female	235,105	54.7%

Financial Status (60+, % 60+)		
Below Poverty Guideline	37,139	8.6%
Below 125% of Poverty Guideline	55,851	13.0%
Minorities Below Poverty Guideline	12,354	2.9%
Minorities Below 125% of Poverty Guideline	16,782	3.9%

Medically Underserved (65+)	
Total Medically Underserved	75,651
Medically Underserved Populations - Living in Areas Defined as Having Medically Underserved Populations	55,578
Medically Underserved Areas - Living in Medically Underserved Areas	20,073

Living Situation (60+)	
Living Alone	100,115

Grandparents (60+)	
Total 60+ Living With Own Grandchildren (Under Age 18)	21,134
Grandparent Responsible for Own Grandchildren (Under Age 18)	7,823
Grandparent Not Responsible for Own Grandchildren (Under Age 18)	13,301
60+ Not Living With Own Grandchildren (Under Age 18)	398,977

Skilled Nursing Facility Utilization	
SNF Beds	9,841
Community Beds	9,323
Sheltered Beds	278
Veterans Administration Beds	240
Other Beds	0
SNFs With Beds	88
Community Beds	79
Sheltered Beds	7
Veterans Administration Beds	2
Other Beds	0
SNFs With Community Beds	79
Community Bed Days	3,455,593
Community Patient Days	3,041,086
Medicaid Patient Days	1,884,531
Occupancy Rate	88.0%
Percent Medicaid	62.0%

Adult Day Care	
Facilities	21
Capacity	641

Adult Family Care Homes	
Homes	39
Beds	186

Home Health Agencies	
Agencies	150
Medicaid Certified Agencies	27
Medicare Certified Agencies	88

Homemaker & Companion Service Companies	
Companies	162

Ambulatory Surgical Centers	
Facilities	37
Operating Rooms	110
Recovery Beds	283

*Total Minorities = (60+ Population) – (White Non-Hispanic 60+)

2012 Florida PSA Profiles

PSA 4 (Continued)

Rural Designation	
Rural (Yes/No)	0

Assisted Living Facilities	
Total Beds	5,400
OSS Beds**	1,275
Non-OSS Beds	4,125
Total Facilities	211
Facilities With ECC License***	30
Facilities With LMH License****	51
Facilities With LNS License*****	53

Hospitals	
Hospitals	27
Hospitals With Skilled Nursing Units	2
Hospital Beds	6,038
Skilled Nursing Unit Beds	92

Medical Professionals	
Medical Doctors	
Licensed	4,563
Limited License	8
Critical Need Area License	15
Restricted	0
Medical Faculty Certificate	2
Public Health Certificate	0
Specialties	
Licensed Podiatric Physicians	94
Licensed Osteopathic Physicians	404
Licensed Chiropractic Physicians	488
Registered Nurses	
Licensed Registered Nurses	24,126

Driver's License	
Drivers With Florida Driver's License - All Ages	1,558,902
Drivers With Florida Driver's License - Age 60+	398,529
Percent of Drivers With Florida Driver's License - Age 60+	25.6%

Food Stamps (60+)	
Participants (60+)	27,323
Potentially Eligible	55,851
Food Stamp Participation Rate (60+)	48.9%

Registered Voters	
Registered to Vote in Florida - All Ages	1,330,040
Registered to Vote in Florida - Age 60+	413,460
Percent of Population Registered to Vote in Florida - Age 60+	31.1%

Households With Cost Burden Above 30% and Income Below 50% Area Median Income (65+) (2010)	
Elder Households	195,246
Percent of All Households	15.6%

Median Household Income (All Ages)	
2007-2011	\$56,463

Medicaid & Medicare Eligibility	
Medicaid Eligible - All Ages	413,208
Medicaid Eligible - 60+	43,327
Dual Eligible - All Ages	60,739
Dual Eligible - 60+	37,813

Veterans	
Total	222,416
Age 45-64	89,074
Age 65-84	71,740
Age 85+	12,691

Disability Status (60+)	
With One Type of Disability*****	62,412
Hearing	49,881
Vision	24,373
Cognitive	34,389
Ambulatory	86,269
Self-Care	29,902
Independent Living	53,366
With Two or More Disabilities	70,795
With No Disabilities	302,758
Probable Alzheimer's Cases*****	35,699

English Proficiency (60+)	
With Limited English Proficiency	9,048

** OSS beds: Optional State Supplementation beds

*** ECC License: Extended Congregate Care License

****LMH License: Limited Mental Health License

*****LNS License: Limited Nursing Services License

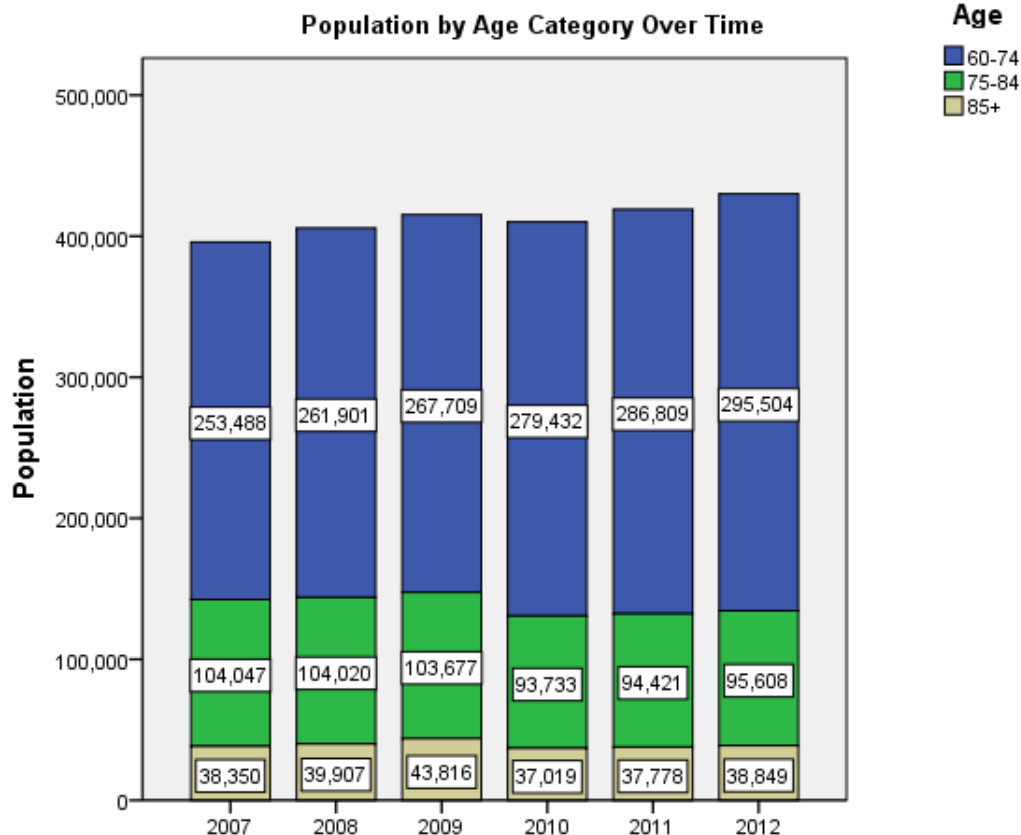
*****With One Type of Disability: 65+ people who have only one type of disability

***** Probable Alzheimer's Cases = (65-74 Population x 0.0136) + (75-84 Population x 0.1822) + (85+population x 0.4098)

2012 Florida PSA Profiles

PSA 4 (Continued)

Cost of Living	
	Annual Expenses*
Single Elders	
Owner without Mortgage	\$18,574
Renter, one bedroom	\$22,889
Owner with Mortgage	\$27,965
Elder Couple	
Owner without Mortgage	\$29,484
Renter, one bedroom	\$33,799
Owner with Mortgage	\$38,875
* Annual expenses include: housing, including utilities, taxes, insurance; food; transportation; health care, based on good health; and miscellaneous.	
Note: Wider Opportunities for Women Elder Economic Security Standard™ Index (Elder Index) measures the incomes workers and retired elders need to achieve economic security. Data as of March 2013.	





2012 Florida PSA Profiles

PSA 4 (Continued)

Sources

- Population: Florida Population by County, Age, Race, Ethnicity and Gender provided by Florida Legislature, Office of Economic and Demographic Research
- Financial Status & Living Situation: Department of Elder Affairs calculations based on Florida Population data and 2007-2011 American Community Survey
- Medically Underserved Population: Florida Department of Health
- Grandparents: Department of Elder Affairs calculations based on Florida Population data and 2007-2011 American Community Survey, Special Tabulation on Aging
- Skilled Nursing Facility Utilization, Adult Day Care, Adult Family Care Home, Ambulatory Surgical Centers, Assisted Living Facilities, Home Health Agencies, Homemakers & Companion Service Companies, Hospitals: Florida Agency for Health Care Administration
- Rural Designation: Based on the definition of Rural Designation by Rural Economic Development Initiative
- Medical Professionals: Florida Department of Health
- Driver's License: Florida Department of Highway Safety & Motor Vehicles
- Food Stamps: Florida Department of Children and Families
- Registered Voters (Data as of 2/28/2013) : Florida Department of State
- Households with Cost Burden Above 30% and income below 50% Area Median Income: The Shimberg Center for Housing Studies
- Median Household Incomes: U.S. Census Bureau: State and County QuickFacts
- Medicaid & Medicare Eligibility and Medicaid Eligibility: Florida Agency for Health Care Administration
- Veterans Demographics: Florida Department of Veterans' Affairs
- Disability Status: Department of Elder Affairs calculations based on Florida Population data and 2009-2011 American Community Survey Data
- DOEA Calculation based on the 2012 Population and Alzheimer's by Age in 2011 Alzheimer's Disease Facts and Figures report at http://www.alz.org/documents_custom/Facts_2011/ALZ_FL.pdf?type=interior_map&facts=undefined&facts=facts
- English Proficiency: 2007-2011 American Community Survey, Special Tabulation on Aging
- Cost of Living: Wider Opportunities for Women Elder Economic Security Standard™ Index (Elder Index) at <http://www.basiceconomicsecurity.org/EI/>



2012 Florida PSA Profiles

PSA 5

Population by Age Category		
All Ages	1,388,943	100.0%
Under 60	989,832	71.3%
60+	399,111	28.7%
65+	300,359	21.6%
70+	214,098	15.4%
75+	145,678	10.5%
80+	91,799	6.6%
85+	46,277	3.3%

Population by Race (60+)		
White	369,456	92.6%
Non-White	29,655	7.4%
Black	16,184	4.1%
Other Minorities	13,471	3.4%

Population by Ethnicity (60+)		
Total Hispanic	15,463	3.9%
White	10,373	2.6%
Non-White	5,090	1.3%
Total Non-Hispanic	383,648	96.1%
Total Minorities*	40,028	10.0%

Population by Gender (60+)		
Male	179,210	44.9%
Female	219,901	55.1%

Financial Status (60+, % 60+)		
Below Poverty Guideline	36,888	9.2%
Below 125% of Poverty Guideline	56,408	14.1%
Minorities Below Poverty Guideline	6,909	1.7%
Minorities Below 125% of Poverty Guideline	9,171	2.3%

Medically Underserved (65+)	
Total Medically Underserved	52,034
Medically Underserved Populations - Living in Areas Defined as Having Medically Underserved Populations	52,034
Medically Underserved Areas - Living in Medically Underserved Areas	0

Living Situation (60+)	
Living Alone	110,862

Grandparents (60+)	
Total 60+ Living With Own Grandchildren (Under Age 18)	11,828
Grandparent Responsible for Own Grandchildren (Under Age 18)	3,943
Grandparent Not Responsible for Own Grandchildren (Under Age 18)	7,884
60+ Not Living With Own Grandchildren (Under Age 18)	376,019

Skilled Nursing Facility Utilization	
SNF Beds	10,065
Community Beds	9,715
Sheltered Beds	201
Veterans Administration Beds	120
Other Beds	29
SNFs With Beds	92
Community Beds	86
Sheltered Beds	4
Veterans Administration Beds	1
Other Beds	1
SNFs With Community Beds	86
Community Bed Days	3,555,690
Community Patient Days	3,151,310
Medicaid Patient Days	2,022,754
Occupancy Rate	88.6%
Percent Medicaid	64.2%

Adult Day Care	
Facilities	12
Capacity	623

Adult Family Care Homes	
Homes	34
Beds	146

Home Health Agencies	
Agencies	129
Medicaid Certified Agencies	17
Medicare Certified Agencies	78

Homemaker & Companion Service Companies	
Companies	149

Ambulatory Surgical Centers	
Facilities	39
Operating Rooms	108
Recovery Beds	317

*Total Minorities = (60+ Population) – (White Non-Hispanic 60+)

2012 Florida PSA Profiles

PSA 5 (Continued)

Rural Designation	
Rural (Yes/No)	0

Assisted Living Facilities	
Total Beds	9,664
OSS Beds**	2,770
Non-OSS Beds	6,894
Total Facilities	231
Facilities With ECC License***	49
Facilities With LMH License****	48
Facilities With LNS License*****	54

Hospitals	
Hospitals	25
Hospitals With Skilled Nursing Units	3
Hospital Beds	5,260
Skilled Nursing Unit Beds	78

Medical Professionals	
Medical Doctors	
Licensed	3,354
Limited License	12
Critical Need Area License	4
Restricted	0
Medical Faculty Certificate	0
Public Health Certificate	1
Specialties	
Licensed Podiatric Physicians	103
Licensed Osteopathic Physicians	602
Licensed Chiropractic Physicians	484
Registered Nurses	
Licensed Registered Nurses	18,486

Driver's License	
Drivers With Florida Driver's License - All Ages	1,121,342
Drivers With Florida Driver's License - Age 60+	349,263
Percent of Drivers With Florida Driver's License - Age 60+	31.1%

Food Stamps (60+)	
Participants (60+)	24,455
Potentially Eligible	56,408
Food Stamp Participation Rate (60+)	43.4%

Registered Voters	
Registered to Vote in Florida - All Ages	906,860
Registered to Vote in Florida - Age 60+	338,086
Percent of Population Registered to Vote in Florida - Age 60+	37.3%

Households With Cost Burden Above 30% and Income Below 50% Area Median Income (65+) (2010)	
Elder Households	197,079
Percent of All Households	16.5%

Median Household Income (All Ages)	
2007-2011	\$56,354

Medicaid & Medicare Eligibility	
Medicaid Eligible - All Ages	217,699
Medicaid Eligible - 60+	36,510
Dual Eligible - All Ages	52,141
Dual Eligible - 60+	33,088

Veterans	
Total	140,805
Age 45-64	50,927
Age 65-84	56,099
Age 85+	12,687

Disability Status (60+)	
With One Type of Disability*****	56,733
Hearing	48,166
Vision	20,513
Cognitive	31,252
Ambulatory	80,981
Self-Care	25,130
Independent Living	49,788
With Two or More Disabilities	65,548
With No Disabilities	273,409
Probable Alzheimer's Cases*****	39,187

English Proficiency (60+)	
With Limited English Proficiency	9,531

** OSS beds: Optional State Supplementation beds

*** ECC License: Extended Congregate Care License

****LMH License: Limited Mental Health License

*****LNS License: Limited Nursing Services License

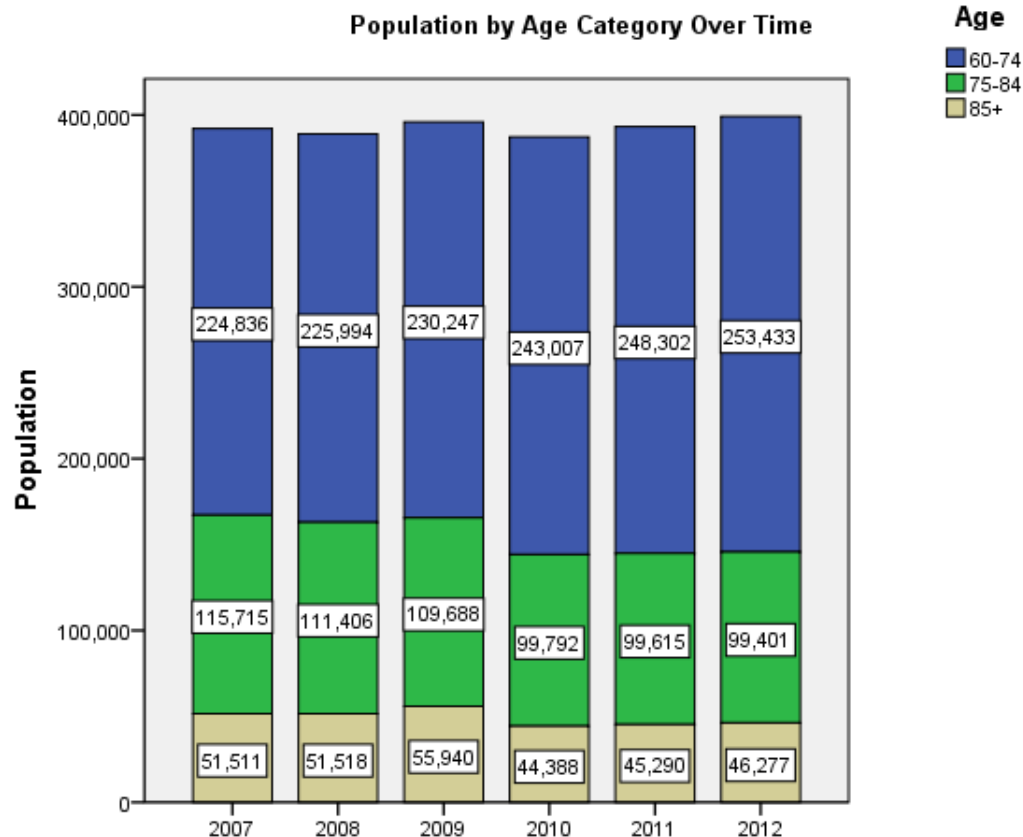
*****With One Type of Disability: 65+ people who have only one type of disability

***** Probable Alzheimer's Cases = (65-74 Population x 0.0136) + (75-84 Population x 0.1822) + (85+population x 0.4098)

2012 Florida PSA Profiles

PSA 5 (Continued)

Cost of Living	
	Annual Expenses*
Single Elders	
Owner without Mortgage	\$16,914
Renter, one bedroom	\$21,402
Owner with Mortgage	\$24,924
Elder Couple	
Owner without Mortgage	\$25,722
Renter, one bedroom	\$30,210
Owner with Mortgage	\$33,732
* Annual expenses include: housing, including utilities, taxes, insurance; food; transportation; health care, based on good health; and miscellaneous.	
Note: Wider Opportunities for Women Elder Economic Security Standard™ Index (Elder Index) measures the incomes workers and retired elders need to achieve economic security. Data as of March 2013.	





2012 Florida PSA Profiles

PSA 5 (Continued)

Sources

- Population: Florida Population by County, Age, Race, Ethnicity and Gender provided by Florida Legislature, Office of Economic and Demographic Research
- Financial Status & Living Situation: Department of Elder Affairs calculations based on Florida Population data and 2007-2011 American Community Survey
- Medically Underserved Population: Florida Department of Health
- Grandparents: Department of Elder Affairs calculations based on Florida Population data and 2007-2011 American Community Survey, Special Tabulation on Aging
- Skilled Nursing Facility Utilization, Adult Day Care, Adult Family Care Home, Ambulatory Surgical Centers, Assisted Living Facilities, Home Health Agencies, Homemakers & Companion Service Companies, Hospitals: Florida Agency for Health Care Administration
- Rural Designation: Based on the definition of Rural Designation by Rural Economic Development Initiative
- Medical Professionals: Florida Department of Health
- Driver's License: Florida Department of Highway Safety & Motor Vehicles
- Food Stamps: Florida Department of Children and Families
- Registered Voters (Data as of 2/28/2013) : Florida Department of State
- Households with Cost Burden Above 30% and income below 50% Area Median Income: The Shimberg Center for Housing Studies
- Median Household Incomes: U.S. Census Bureau: State and County QuickFacts
- Medicaid & Medicare Eligibility and Medicaid Eligibility: Florida Agency for Health Care Administration
- Veterans Demographics: Florida Department of Veterans' Affairs
- Disability Status: Department of Elder Affairs calculations based on Florida Population data and 2009-2011 American Community Survey Data
- DOEA Calculation based on the 2012 Population and Alzheimer's by Age in 2011 Alzheimer's Disease Facts and Figures report at http://www.alz.org/documents_custom/Facts_2011/ALZ_FL.pdf?type=interior_map&facts=undefined&facts=facts
- English Proficiency: 2007-2011 American Community Survey, Special Tabulation on Aging
- Cost of Living: Wider Opportunities for Women Elder Economic Security Standard™ Index (Elder Index) at <http://www.basiceconomicsecurity.org/EI/>

2012 Florida PSA Profiles

PSA 6

Population by Age Category		
All Ages	2,320,025	100.0%
Under 60	1,804,322	77.8%
60+	515,703	22.2%
65+	380,094	16.4%
70+	262,597	11.3%
75+	170,400	7.3%
80+	101,083	4.4%
85+	47,192	2.0%

Population by Race (60+)		
White	444,058	86.1%
Non-White	71,645	13.9%
Black	42,700	8.3%
Other Minorities	28,945	5.6%

Population by Ethnicity (60+)		
Total Hispanic	54,644	10.6%
White	36,597	7.1%
Non-White	18,047	3.5%
Total Non-Hispanic	461,059	89.4%
Total Minorities*	108,242	21.0%

Population by Gender (60+)		
Male	235,154	45.6%
Female	280,549	54.4%

Financial Status (60+, % 60+)		
Below Poverty Guideline	47,730	9.3%
Below 125% of Poverty Guideline	73,152	14.2%
Minorities Below Poverty Guideline	18,691	3.6%
Minorities Below 125% of Poverty Guideline	26,998	5.2%

Medically Underserved (65+)	
Total Medically Underserved	98,618
Medically Underserved Populations - Living in Areas Defined as Having Medically Underserved Populations	93,252
Medically Underserved Areas - Living in Medically Underserved Areas	5,366

Living Situation (60+)	
Living Alone	116,608

Grandparents (60+)	
Total 60+ Living With Own Grandchildren (Under Age 18)	25,078
Grandparent Responsible for Own Grandchildren (Under Age 18)	7,627
Grandparent Not Responsible for Own Grandchildren (Under Age 18)	17,447
60+ Not Living With Own Grandchildren (Under Age 18)	481,003

Skilled Nursing Facility Utilization	
SNF Beds	9,220
Community Beds	8,768
Sheltered Beds	452
Veterans Administration Beds	0
Other Beds	0
SNFs With Beds	79
Community Beds	71
Sheltered Beds	8
Veterans Administration Beds	0
Other Beds	0
SNFs With Community Beds	71
Community Bed Days	3,198,408
Community Patient Days	2,831,505
Medicaid Patient Days	1,683,456
Occupancy Rate	88.5%
Percent Medicaid	59.5%

Adult Day Care	
Facilities	16
Capacity	932

Adult Family Care Homes	
Homes	61
Beds	267

Home Health Agencies	
Agencies	195
Medicaid Certified Agencies	39
Medicare Certified Agencies	121

Homemaker & Companion Service Companies	
Companies	226

Ambulatory Surgical Centers	
Facilities	47
Operating Rooms	132
Recovery Beds	387

*Total Minorities = (60+ Population) – (White Non-Hispanic 60+)

2012 Florida PSA Profiles

PSA 6 (Continued)

Rural Designation	
Rural (Yes/No)	0

Assisted Living Facilities	
Total Beds	9,279
OSS Beds**	2,638
Non-OSS Beds	6,641
Total Facilities	278
Facilities With ECC License***	31
Facilities With LMH License****	60
Facilities With LNS License*****	52

Hospitals	
Hospitals	30
Hospitals With Skilled Nursing Units	1
Hospital Beds	7,042
Skilled Nursing Unit Beds	15

Medical Professionals	
Medical Doctors	
Licensed	5,498
Limited License	14
Critical Need Area License	20
Restricted	0
Medical Faculty Certificate	2
Public Health Certificate	0
Specialties	
Licensed Podiatric Physicians	133
Licensed Osteopathic Physicians	483
Licensed Chiropractic Physicians	488
Registered Nurses	
Licensed Registered Nurses	24,617

Driver's License	
Drivers With Florida Driver's License - All Ages	1,756,908
Drivers With Florida Driver's License - Age 60+	459,637
Percent of Drivers With Florida Driver's License - Age 60+	26.2%

Food Stamps (60+)	
Participants (60+)	42,595
Potentially Eligible	73,152
Food Stamp Participation Rate (60+)	58.2%

Registered Voters	
Registered to Vote in Florida - All Ages	1,400,348
Registered to Vote in Florida - Age 60+	454,331
Percent of Population Registered to Vote in Florida - Age 60+	32.4%

Households With Cost Burden Above 30% and Income Below 50% Area Median Income (65+) (2010)	
Elder Households	231,252
Percent of All Households	15.6%

Median Household Income (All Ages)	
2007-2011	\$44,638

Medicaid & Medicare Eligibility	
Medicaid Eligible - All Ages	449,930
Medicaid Eligible - 60+	56,623
Dual Eligible - All Ages	76,819
Dual Eligible - 60+	49,741

Veterans	
Total	190,907
Age 45-64	71,489
Age 65-84	70,939
Age 85+	13,174

Disability Status (60+)	
With One Type of Disability*****	75,683
Hearing	63,366
Vision	29,475
Cognitive	42,216
Ambulatory	105,324
Self-Care	35,215
Independent Living	64,490
With Two or More Disabilities	85,785
With No Disabilities	360,215
Probable Alzheimer's Cases*****	44,651

English Proficiency (60+)	
With Limited English Proficiency	23,960

** OSS beds: Optional State Supplementation beds

*** ECC License: Extended Congregate Care License

****LMH License: Limited Mental Health License

*****LNS License: Limited Nursing Services License

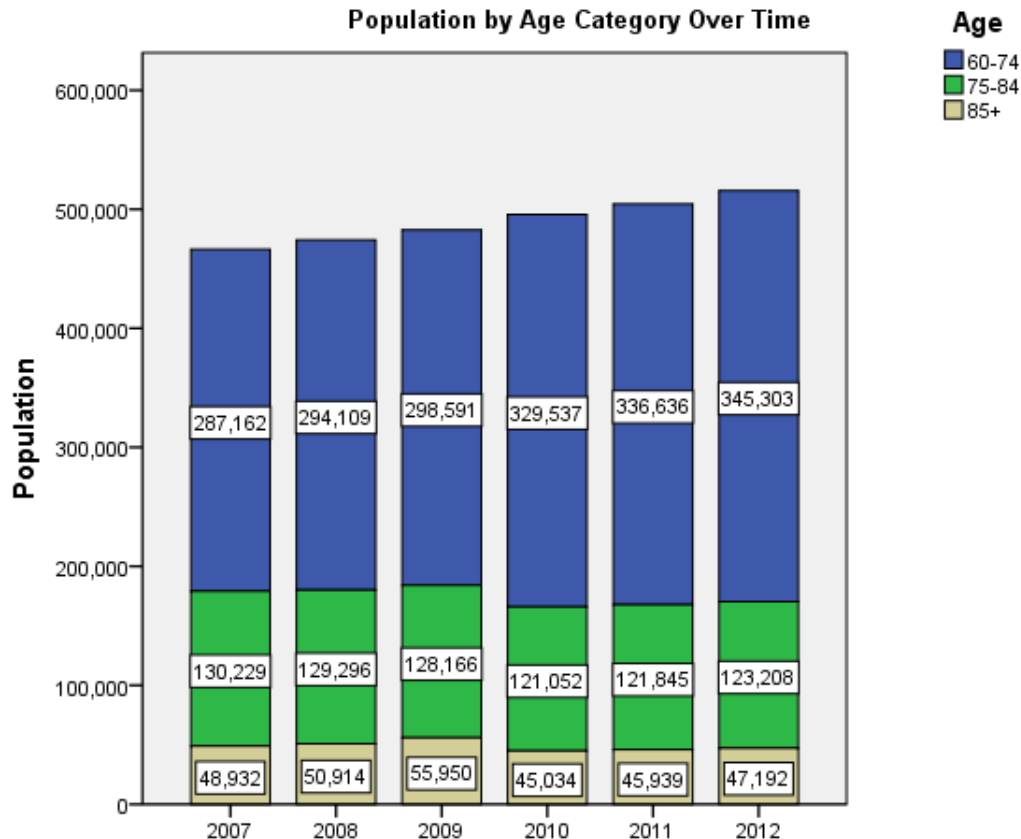
*****With One Type of Disability: 65+ people who have only one type of disability

***** Probable Alzheimer's Cases = (65-74 Population x 0.0136) + (75-84 Population x 0.1822) + (85+population x 0.4098)

2012 Florida PSA Profiles

PSA 6 (Continued)

Cost of Living	
	Annual Expenses*
Single Elders	
Owner without Mortgage	\$17,880
Renter, one bedroom	\$22,121
Owner with Mortgage	\$26,114
Elder Couple	
Owner without Mortgage	\$28,006
Renter, one bedroom	\$32,246
Owner with Mortgage	\$36,240
* Annual expenses include: housing, including utilities, taxes, insurance; food; transportation; health care, based on good health; and miscellaneous.	
Note: Wider Opportunities for Women Elder Economic Security Standard™ Index (Elder Index) measures the incomes workers and retired elders need to achieve economic security. Data as of March 2013.	





2012 Florida PSA Profiles

PSA 6 (Continued)

Sources

- Population: Florida Population by County, Age, Race, Ethnicity and Gender provided by Florida Legislature, Office of Economic and Demographic Research
- Financial Status & Living Situation: Department of Elder Affairs calculations based on Florida Population data and 2007-2011 American Community Survey
- Medically Underserved Population: Florida Department of Health
- Grandparents: Department of Elder Affairs calculations based on Florida Population data and 2007-2011 American Community Survey, Special Tabulation on Aging
- Skilled Nursing Facility Utilization, Adult Day Care, Adult Family Care Home, Ambulatory Surgical Centers, Assisted Living Facilities, Home Health Agencies, Homemakers & Companion Service Companies, Hospitals: Florida Agency for Health Care Administration
- Rural Designation: Based on the definition of Rural Designation by Rural Economic Development Initiative
- Medical Professionals: Florida Department of Health
- Driver's License: Florida Department of Highway Safety & Motor Vehicles
- Food Stamps: Florida Department of Children and Families
- Registered Voters (Data as of 2/28/2013) : Florida Department of State
- Households with Cost Burden Above 30% and income below 50% Area Median Income: The Shimberg Center for Housing Studies
- Median Household Incomes: U.S. Census Bureau: State and County QuickFacts
- Medicaid & Medicare Eligibility and Medicaid Eligibility: Florida Agency for Health Care Administration
- Veterans Demographics: Florida Department of Veterans' Affairs
- Disability Status: Department of Elder Affairs calculations based on Florida Population data and 2009-2011 American Community Survey Data
- DOEA Calculation based on the 2012 Population and Alzheimer's by Age in 2011 Alzheimer's Disease Facts and Figures report at http://www.alz.org/documents_custom/Facts_2011/ALZ_FL.pdf?type=interior_map&facts=undefined&facts=facts
- English Proficiency: 2007-2011 American Community Survey, Special Tabulation on Aging
- Cost of Living: Wider Opportunities for Women Elder Economic Security Standard™ Index (Elder Index) at <http://www.basiceconomicsecurity.org/EI/>

2012 Florida PSA Profiles

PSA 7

Population by Age Category		
All Ages	2,430,536	100.0%
Under 60	1,980,376	81.5%
60+	450,160	18.5%
65+	319,801	13.2%
70+	217,596	9.0%
75+	141,730	5.8%
80+	84,301	3.5%
85+	40,447	1.7%

Population by Race (60+)		
White	362,904	80.6%
Non-White	87,256	19.4%
Black	49,401	11.0%
Other Minorities	37,855	8.4%

Population by Ethnicity (60+)		
Total Hispanic	65,936	14.6%
White	43,985	9.8%
Non-White	21,951	4.9%
Total Non-Hispanic	384,224	85.4%
Total Minorities*	131,241	29.2%

Population by Gender (60+)		
Male	203,444	45.2%
Female	246,716	54.8%

Financial Status (60+, % 60+)		
Below Poverty Guideline	39,518	8.8%
Below 125% of Poverty Guideline	60,135	13.4%
Minorities Below Poverty Guideline	19,862	4.4%
Minorities Below 125% of Poverty Guideline	28,813	6.4%

Medically Underserved (65+)	
Total Medically Underserved	84,908
Medically Underserved Populations - Living in Areas Defined as Having Medically Underserved Populations	48,809
Medically Underserved Areas - Living in Medically Underserved Areas	36,099

Living Situation (60+)	
Living Alone	96,594

Grandparents (60+)	
Total 60+ Living With Own Grandchildren (Under Age 18)	30,892
Grandparent Responsible for Own Grandchildren (Under Age 18)	8,424
Grandparent Not Responsible for Own Grandchildren (Under Age 18)	22,473
60+ Not Living With Own Grandchildren (Under Age 18)	410,006

Skilled Nursing Facility Utilization	
SNF Beds	9,213
Community Beds	8,955
Sheltered Beds	258
Veterans Administration Beds	0
Other Beds	0
SNFs With Beds	106
Community Beds	71
Sheltered Beds	35
Veterans Administration Beds	0
Other Beds	0
SNFs With Community Beds	71
Community Bed Days	3,277,530
Community Patient Days	2,941,379
Medicaid Patient Days	1,774,604
Occupancy Rate	89.7%
Percent Medicaid	60.3%

Adult Day Care	
Facilities	17
Capacity	848

Adult Family Care Homes	
Homes	36
Beds	165

Home Health Agencies	
Agencies	147
Medicaid Certified Agencies	28
Medicare Certified Agencies	93

Homemaker & Companion Service Companies	
Companies	176

Ambulatory Surgical Centers	
Facilities	50
Operating Rooms	125
Recovery Beds	368

*Total Minorities = (60+ Population) – (White Non-Hispanic 60+)

2012 Florida PSA Profiles

PSA 7 (Continued)

Rural Designation	
Rural (Yes/No)	0

Assisted Living Facilities	
Total Beds	6,980
OSS Beds**	1,061
Non-OSS Beds	5,919
Total Facilities	272
Facilities With ECC License***	28
Facilities With LMH License****	35
Facilities With LNS License*****	95

Hospitals	
Hospitals	32
Hospitals With Skilled Nursing Units	1
Hospital Beds	6,952
Skilled Nursing Unit Beds	18

Medical Professionals	
Medical Doctors	
Licensed	5,066
Limited License	7
Critical Need Area License	53
Restricted	0
Medical Faculty Certificate	9
Public Health Certificate	0
Specialties	
Licensed Podiatric Physicians	102
Licensed Osteopathic Physicians	440
Licensed Chiropractic Physicians	538
Registered Nurses	
Licensed Registered Nurses	23,800

Driver's License	
Drivers With Florida Driver's License - All Ages	1,836,117
Drivers With Florida Driver's License - Age 60+	419,564
Percent of Drivers With Florida Driver's License - Age 60+	22.9%

Food Stamps (60+)	
Participants (60+)	41,005
Potentially Eligible	60,135
Food Stamp Participation Rate (60+)	68.2%

Registered Voters	
Registered to Vote in Florida - All Ages	1,506,871
Registered to Vote in Florida - Age 60+	412,210
Percent of Population Registered to Vote in Florida - Age 60+	27.4%

Households With Cost Burden Above 30% and Income Below 50% Area Median Income (65+) (2010)	
Elder Households	191,198
Percent of All Households	16.6%

Median Household Income (All Ages)	
2007-2011	\$54,166

Medicaid & Medicare Eligibility	
Medicaid Eligible - All Ages	425,758
Medicaid Eligible - 60+	53,736
Dual Eligible - All Ages	71,342
Dual Eligible - 60+	47,224

Veterans	
Total	183,555
Age 45-64	74,284
Age 65-84	58,582
Age 85+	11,410

Disability Status (60+)	
With One Type of Disability*****	66,923
Hearing	49,815
Vision	26,285
Cognitive	36,846
Ambulatory	93,491
Self-Care	31,235
Independent Living	58,580
With Two or More Disabilities	74,361
With No Disabilities	315,552
Probable Alzheimer's Cases*****	37,460

English Proficiency (60+)	
With Limited English Proficiency	30,323

** OSS beds: Optional State Supplementation beds

*** ECC License: Extended Congregate Care License

****LMH License: Limited Mental Health License

*****LNS License: Limited Nursing Services License

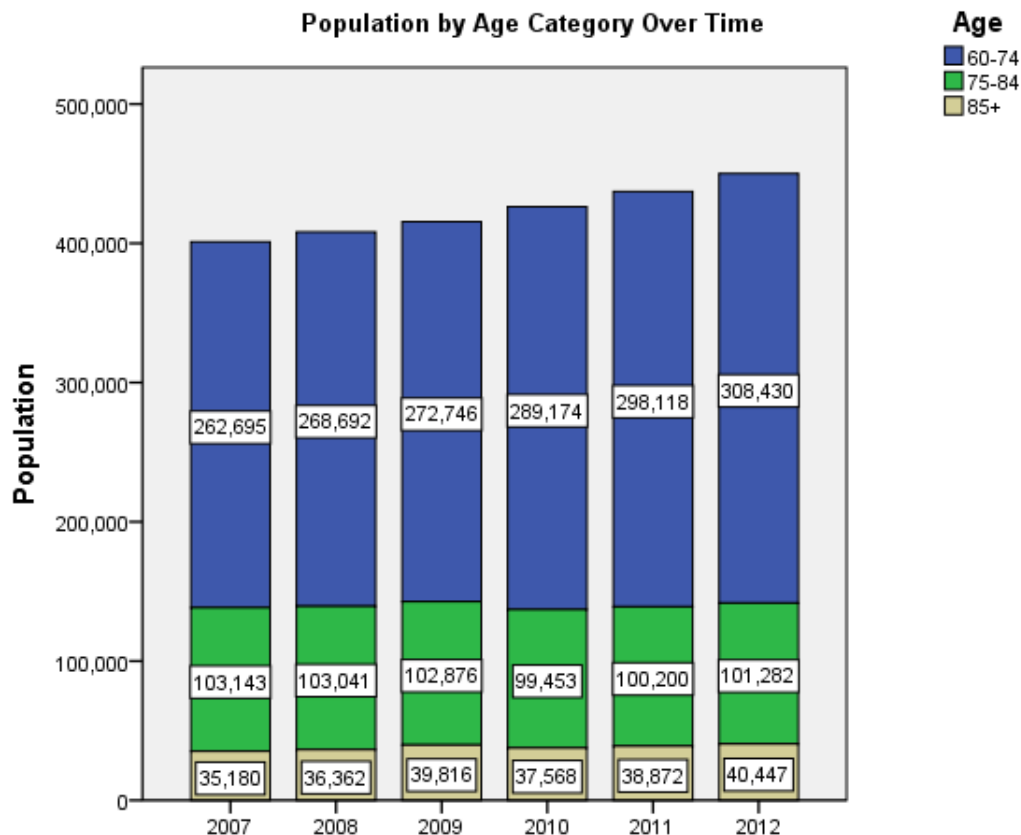
*****With One Type of Disability: 65+ people who have only one type of disability

***** Probable Alzheimer's Cases = (65-74 Population x 0.0136) + (75-84 Population x 0.1822) + (85+population x 0.4098)

2012 Florida PSA Profiles

PSA 7 (Continued)

Cost of Living	
	Annual Expenses*
Single Elders	
Owner without Mortgage	\$17,658
Renter, one bedroom	\$22,815
Owner with Mortgage	\$26,961
Elder Couple	
Owner without Mortgage	\$27,261
Renter, one bedroom	\$32,418
Owner with Mortgage	\$36,564
* Annual expenses include: housing, including utilities, taxes, insurance; food; transportation; health care, based on good health; and miscellaneous.	
Note: Wider Opportunities for Women Elder Economic Security Standard™ Index (Elder Index) measures the incomes workers and retired elders need to achieve economic security. Data as of March 2013.	





2012 Florida PSA Profiles

PSA 7 (Continued)

Sources

- Population: Florida Population by County, Age, Race, Ethnicity and Gender provided by Florida Legislature, Office of Economic and Demographic Research
- Financial Status & Living Situation: Department of Elder Affairs calculations based on Florida Population data and 2007-2011 American Community Survey
- Medically Underserved Population: Florida Department of Health
- Grandparents: Department of Elder Affairs calculations based on Florida Population data and 2007-2011 American Community Survey, Special Tabulation on Aging
- Skilled Nursing Facility Utilization, Adult Day Care, Adult Family Care Home, Ambulatory Surgical Centers, Assisted Living Facilities, Home Health Agencies, Homemakers & Companion Service Companies, Hospitals: Florida Agency for Health Care Administration
- Rural Designation: Based on the definition of Rural Designation by Rural Economic Development Initiative
- Medical Professionals: Florida Department of Health
- Driver's License: Florida Department of Highway Safety & Motor Vehicles
- Food Stamps: Florida Department of Children and Families
- Registered Voters (Data as of 2/28/2013) : Florida Department of State
- Households with Cost Burden Above 30% and income below 50% Area Median Income: The Shimberg Center for Housing Studies
- Median Household Incomes: U.S. Census Bureau: State and County QuickFacts
- Medicaid & Medicare Eligibility and Medicaid Eligibility: Florida Agency for Health Care Administration
- Veterans Demographics: Florida Department of Veterans' Affairs
- Disability Status: Department of Elder Affairs calculations based on Florida Population data and 2009-2011 American Community Survey Data
- DOEA Calculation based on the 2012 Population and Alzheimer's by Age in 2011 Alzheimer's Disease Facts and Figures report at http://www.alz.org/documents_custom/Facts_2011/ALZ_FL.pdf?type=interior_map&facts=undefined&facts=facts
- English Proficiency: 2007-2011 American Community Survey, Special Tabulation on Aging
- Cost of Living: Wider Opportunities for Women Elder Economic Security Standard™ Index (Elder Index) at <http://www.basiceconomicsecurity.org/EI/>



2012 Florida PSA Profiles

PSA 8

Population by Age Category		
All Ages	1,600,110	100.0%
Under 60	1,047,504	65.5%
60+	552,606	34.5%
65+	430,378	26.9%
70+	306,839	19.2%
75+	200,641	12.5%
80+	119,096	7.4%
85+	55,172	3.4%

Population by Race (60+)		
White	517,729	93.7%
Non-White	34,877	6.3%
Black	16,366	3.0%
Other Minorities	18,511	3.3%

Population by Ethnicity (60+)		
Total Hispanic	25,643	4.6%
White	16,892	3.1%
Non-White	8,751	1.6%
Total Non-Hispanic	526,963	95.4%
Total Minorities*	51,769	9.4%

Population by Gender (60+)		
Male	258,858	46.8%
Female	293,748	53.2%

Financial Status (60+, % 60+)		
Below Poverty Guideline	40,347	7.3%
Below 125% of Poverty Guideline	59,502	10.8%
Minorities Below Poverty Guideline	9,735	1.8%
Minorities Below 125% of Poverty Guideline	13,341	2.4%

Medically Underserved (65+)	
Total Medically Underserved	91,660
Medically Underserved Populations - Living in Areas Defined as Having Medically Underserved Populations	89,204
Medically Underserved Areas - Living in Medically Underserved Areas	2,456

Living Situation (60+)	
Living Alone	117,511

Grandparents (60+)	
Total 60+ Living With Own Grandchildren (Under Age 18)	14,702
Grandparent Responsible for Own Grandchildren (Under Age 18)	3,974
Grandparent Not Responsible for Own Grandchildren (Under Age 18)	10,732
60+ Not Living With Own Grandchildren (Under Age 18)	529,618

Skilled Nursing Facility Utilization	
SNF Beds	7,556
Community Beds	7,028
Sheltered Beds	408
Veterans Administration Beds	120
Other Beds	0
SNFs With Beds	74
Community Beds	65
Sheltered Beds	8
Veterans Administration Beds	1
Other Beds	0
SNFs With Community Beds	65
Community Bed Days	2,567,948
Community Patient Days	2,091,850
Medicaid Patient Days	1,205,067
Occupancy Rate	81.5%
Percent Medicaid	57.6%

Adult Day Care	
Facilities	17
Capacity	830

Adult Family Care Homes	
Homes	55
Beds	240

Home Health Agencies	
Agencies	167
Medicaid Certified Agencies	16
Medicare Certified Agencies	86

Homemaker & Companion Service Companies	
Companies	133

Ambulatory Surgical Centers	
Facilities	69
Operating Rooms	160
Recovery Beds	411

*Total Minorities = (60+ Population) – (White Non-Hispanic 60+)

2012 Florida PSA Profiles

PSA 8 (Continued)

Rural Designation	
Rural (Yes/No)	0

Assisted Living Facilities	
Total Beds	7,589
OSS Beds**	288
Non-OSS Beds	7,301
Total Facilities	139
Facilities With ECC License***	30
Facilities With LMH License****	10
Facilities With LNS License*****	57

Hospitals	
Hospitals	22
Hospitals With Skilled Nursing Units	0
Hospital Beds	4,818
Skilled Nursing Unit Beds	0

Medical Professionals	
Medical Doctors	
Licensed	3,127
Limited License	32
Critical Need Area License	11
Restricted	0
Medical Faculty Certificate	2
Public Health Certificate	0
Specialties	
Licensed Podiatric Physicians	112
Licensed Osteopathic Physicians	366
Licensed Chiropractic Physicians	372
Registered Nurses	
Licensed Registered Nurses	15,114

Driver's License	
Drivers With Florida Driver's License - All Ages	1,134,149
Drivers With Florida Driver's License - Age 60+	414,140
Percent of Drivers With Florida Driver's License - Age 60+	36.5%

Food Stamps (60+)	
Participants (60+)	23,148
Potentially Eligible	59,502
Food Stamp Participation Rate (60+)	38.9%

Registered Voters	
Registered to Vote in Florida - All Ages	1,017,875
Registered to Vote in Florida - Age 60+	487,748
Percent of Population Registered to Vote in Florida - Age 60+	47.9%

Households With Cost Burden Above 30% and Income Below 50% Area Median Income (65+) (2010)	
Elder Households	263,604
Percent of All Households	11.7%

Median Household Income (All Ages)	
2007-2011	\$48,159

Medicaid & Medicare Eligibility	
Medicaid Eligible - All Ages	231,283
Medicaid Eligible - 60+	30,438
Dual Eligible - All Ages	40,171
Dual Eligible - 60+	26,910

Veterans	
Total	147,351
Age 45-64	42,737
Age 65-84	74,203
Age 85+	16,332

Disability Status (60+)	
With One Type of Disability*****	73,930
Hearing	64,368
Vision	22,631
Cognitive	34,321
Ambulatory	86,345
Self-Care	25,753
Independent Living	52,350
With Two or More Disabilities	70,305
With No Disabilities	410,915
Probable Alzheimer's Cases*****	52,251

English Proficiency (60+)	
With Limited English Proficiency	16,543

** OSS beds: Optional State Supplementation beds

*** ECC License: Extended Congregate Care License

****LMH License: Limited Mental Health License

*****LNS License: Limited Nursing Services License

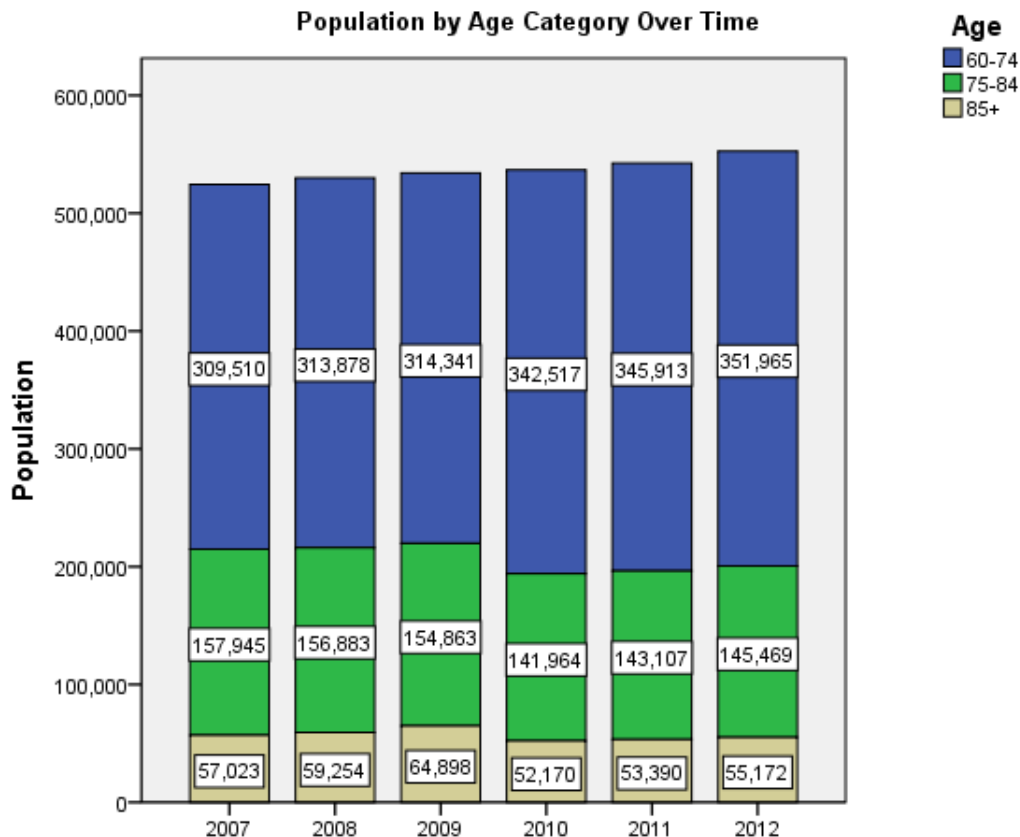
*****With One Type of Disability: 65+ people who have only one type of disability

***** Probable Alzheimer's Cases = (65-74 Population x 0.0136) + (75-84 Population x 0.1822) + (85+population x 0.4098)

2012 Florida PSA Profiles

PSA 8 (Continued)

Cost of Living	
	Annual Expenses*
Single Elders	
Owner without Mortgage	\$19,843
Renter, one bedroom	\$23,657
Owner with Mortgage	\$28,841
Elder Couple	
Owner without Mortgage	\$30,878
Renter, one bedroom	\$34,692
Owner with Mortgage	\$39,876
* Annual expenses include: housing, including utilities, taxes, insurance; food; transportation; health care, based on good health; and miscellaneous.	
Note: Wider Opportunities for Women Elder Economic Security Standard™ Index (Elder Index) measures the incomes workers and retired elders need to achieve economic security. Data as of March 2013.	





2012 Florida PSA Profiles

PSA 8 (Continued)

Sources

- Population: Florida Population by County, Age, Race, Ethnicity and Gender provided by Florida Legislature, Office of Economic and Demographic Research
- Financial Status & Living Situation: Department of Elder Affairs calculations based on Florida Population data and 2007-2011 American Community Survey
- Medically Underserved Population: Florida Department of Health
- Grandparents: Department of Elder Affairs calculations based on Florida Population data and 2007-2011 American Community Survey, Special Tabulation on Aging
- Skilled Nursing Facility Utilization, Adult Day Care, Adult Family Care Home, Ambulatory Surgical Centers, Assisted Living Facilities, Home Health Agencies, Homemakers & Companion Service Companies, Hospitals: Florida Agency for Health Care Administration
- Rural Designation: Based on the definition of Rural Designation by Rural Economic Development Initiative
- Medical Professionals: Florida Department of Health
- Driver's License: Florida Department of Highway Safety & Motor Vehicles
- Food Stamps: Florida Department of Children and Families
- Registered Voters (Data as of 2/28/2013) : Florida Department of State
- Households with Cost Burden Above 30% and income below 50% Area Median Income: The Shimberg Center for Housing Studies
- Median Household Incomes: U.S. Census Bureau: State and County QuickFacts
- Medicaid & Medicare Eligibility and Medicaid Eligibility: Florida Agency for Health Care Administration
- Veterans Demographics: Florida Department of Veterans' Affairs
- Disability Status: Department of Elder Affairs calculations based on Florida Population data and 2009-2011 American Community Survey Data
- DOEA Calculation based on the 2012 Population and Alzheimer's by Age in 2011 Alzheimer's Disease Facts and Figures report at http://www.alz.org/documents_custom/Facts_2011/ALZ_FL.pdf?type=interior_map&facts=undefined&facts=facts
- English Proficiency: 2007-2011 American Community Survey, Special Tabulation on Aging
- Cost of Living: Wider Opportunities for Women Elder Economic Security Standard™ Index (Elder Index) at <http://www.basiceconomicsecurity.org/EI/>



2012 Florida PSA Profiles

PSA 9

Population by Age Category		
All Ages	1,942,224	100.0%
Under 60	1,383,382	71.2%
60+	558,842	28.8%
65+	435,188	22.4%
70+	321,133	16.5%
75+	224,623	11.6%
80+	143,669	7.4%
85+	71,274	3.7%

Population by Race (60+)		
White	498,498	89.2%
Non-White	60,344	10.8%
Black	40,410	7.2%
Other Minorities	19,934	3.6%

Population by Ethnicity (60+)		
Total Hispanic	37,715	6.7%
White	25,883	4.6%
Non-White	11,832	2.1%
Total Non-Hispanic	521,127	93.3%
Total Minorities*	86,227	15.4%

Population by Gender (60+)		
Male	251,231	45.0%
Female	307,611	55.0%

Financial Status (60+, % 60+)		
Below Poverty Guideline	45,883	8.2%
Below 125% of Poverty Guideline	68,333	12.2%
Minorities Below Poverty Guideline	15,636	2.8%
Minorities Below 125% of Poverty Guideline	21,713	3.9%

Medically Underserved (65+)	
Total Medically Underserved	54,673
Medically Underserved Populations - Living in Areas Defined as Having Medically Underserved Populations	52,394
Medically Underserved Areas - Living in Medically Underserved Areas	2,279

Living Situation (60+)	
Living Alone	138,986

Grandparents (60+)	
Total 60+ Living With Own Grandchildren (Under Age 18)	20,057
Grandparent Responsible for Own Grandchildren (Under Age 18)	5,761
Grandparent Not Responsible for Own Grandchildren (Under Age 18)	14,285
60+ Not Living With Own Grandchildren (Under Age 18)	530,114

Skilled Nursing Facility Utilization	
SNF Beds	9,143
Community Beds	8,668
Sheltered Beds	475
Veterans Administration Beds	0
Other Beds	0
SNFs With Beds	84
Community Beds	75
Sheltered Beds	9
Veterans Administration Beds	0
Other Beds	0
SNFs With Community Beds	75
Community Bed Days	3,171,168
Community Patient Days	2,679,976
Medicaid Patient Days	1,631,108
Occupancy Rate	84.5%
Percent Medicaid	60.9%

Adult Day Care	
Facilities	22
Capacity	1,092

Adult Family Care Homes	
Homes	20
Beds	89

Home Health Agencies	
Agencies	253
Medicaid Certified Agencies	29
Medicare Certified Agencies	141

Homemaker & Companion Service Companies	
Companies	181

Ambulatory Surgical Centers	
Facilities	55
Operating Rooms	135
Recovery Beds	377

*Total Minorities = (60+ Population) – (White Non-Hispanic 60+)

2012 Florida PSA Profiles

PSA 9 (Continued)

Rural Designation	
Rural (Yes/No)	0

Assisted Living Facilities	
Total Beds	6,960
OSS Beds**	724
Non-OSS Beds	6,236
Total Facilities	212
Facilities With ECC License***	36
Facilities With LMH License****	29
Facilities With LNS License*****	49

Hospitals	
Hospitals	26
Hospitals With Skilled Nursing Units	0
Hospital Beds	5,522
Skilled Nursing Unit Beds	0

Medical Professionals	
Medical Doctors	
Licensed	5,632
Limited License	73
Critical Need Area License	9
Restricted	0
Medical Faculty Certificate	0
Public Health Certificate	0
Specialties	
Licensed Podiatric Physicians	233
Licensed Osteopathic Physicians	641
Licensed Chiropractic Physicians	864
Registered Nurses	
Licensed Registered Nurses	21,802

Driver's License	
Drivers With Florida Driver's License - All Ages	1,633,315
Drivers With Florida Driver's License - Age 60+	571,856
Percent of Drivers With Florida Driver's License - Age 60+	35.0%

Food Stamps (60+)	
Participants (60+)	31,713
Potentially Eligible	68,333
Food Stamp Participation Rate (60+)	46.4%

Registered Voters	
Registered to Vote in Florida - All Ages	1,271,885
Registered to Vote in Florida - Age 60+	513,101
Percent of Population Registered to Vote in Florida - Age 60+	40.3%

Households With Cost Burden Above 30% and Income Below 50% Area Median Income (65+) (2010)	
Elder Households	273,355
Percent of All Households	15.1%

Median Household Income (All Ages)	
2007-2011	\$51,824

Medicaid & Medicare Eligibility	
Medicaid Eligible - All Ages	288,675
Medicaid Eligible - 60+	42,285
Dual Eligible - All Ages	51,283
Dual Eligible - 60+	36,860

Veterans	
Total	136,144
Age 45-64	43,085
Age 65-84	59,107
Age 85+	17,020

Disability Status (60+)	
With One Type of Disability*****	79,920
Hearing	67,166
Vision	24,387
Cognitive	37,353
Ambulatory	99,009
Self-Care	34,799
Independent Living	61,939
With Two or More Disabilities	80,493
With No Disabilities	402,717
Probable Alzheimer's Cases*****	60,025

English Proficiency (60+)	
With Limited English Proficiency	23,229

** OSS beds: Optional State Supplementation beds

*** ECC License: Extended Congregate Care License

****LMH License: Limited Mental Health License

*****LNS License: Limited Nursing Services License

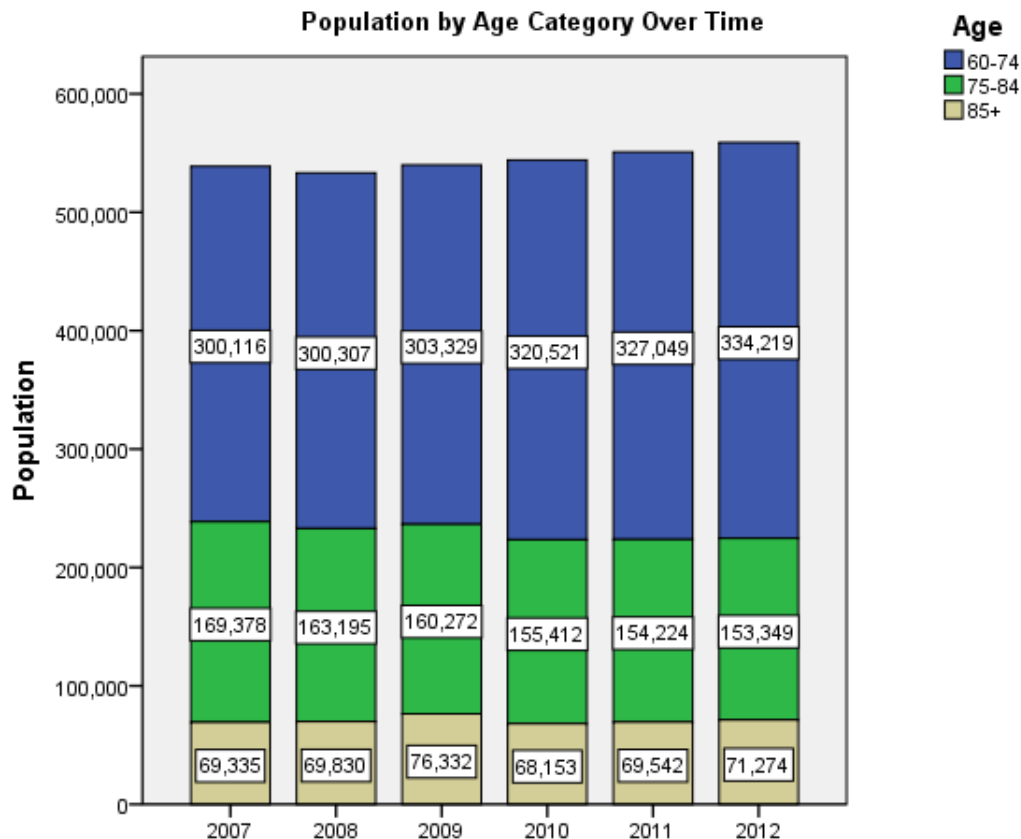
*****With One Type of Disability: 65+ people who have only one type of disability

***** Probable Alzheimer's Cases = (65-74 Population x 0.0136) + (75-84 Population x 0.1822) + (85+population x 0.4098)

2012 Florida PSA Profiles

PSA 9 (Continued)

Cost of Living	
	Annual Expenses*
Single Elders	
Owner without Mortgage	\$20,057
Renter, one bedroom	\$23,359
Owner with Mortgage	\$29,515
Elder Couple	
Owner without Mortgage	\$30,355
Renter, one bedroom	\$33,658
Owner with Mortgage	\$39,814
* Annual expenses include: housing, including utilities, taxes, insurance; food; transportation; health care, based on good health; and miscellaneous.	
Note: Wider Opportunities for Women Elder Economic Security Standard™ Index (Elder Index) measures the incomes workers and retired elders need to achieve economic security. Data as of March 2013.	





2012 Florida PSA Profiles

PSA 9 (Continued)

Sources

- Population: Florida Population by County, Age, Race, Ethnicity and Gender provided by Florida Legislature, Office of Economic and Demographic Research
- Financial Status & Living Situation: Department of Elder Affairs calculations based on Florida Population data and 2007-2011 American Community Survey
- Medically Underserved Population: Florida Department of Health
- Grandparents: Department of Elder Affairs calculations based on Florida Population data and 2007-2011 American Community Survey, Special Tabulation on Aging
- Skilled Nursing Facility Utilization, Adult Day Care, Adult Family Care Home, Ambulatory Surgical Centers, Assisted Living Facilities, Home Health Agencies, Homemakers & Companion Service Companies, Hospitals: Florida Agency for Health Care Administration
- Rural Designation: Based on the definition of Rural Designation by Rural Economic Development Initiative
- Medical Professionals: Florida Department of Health
- Driver's License: Florida Department of Highway Safety & Motor Vehicles
- Food Stamps: Florida Department of Children and Families
- Registered Voters (Data as of 2/28/2013) : Florida Department of State
- Households with Cost Burden Above 30% and income below 50% Area Median Income: The Shimberg Center for Housing Studies
- Median Household Incomes: U.S. Census Bureau: State and County QuickFacts
- Medicaid & Medicare Eligibility and Medicaid Eligibility: Florida Agency for Health Care Administration
- Veterans Demographics: Florida Department of Veterans' Affairs
- Disability Status: Department of Elder Affairs calculations based on Florida Population data and 2009-2011 American Community Survey Data
- DOEA Calculation based on the 2012 Population and Alzheimer's by Age in 2011 Alzheimer's Disease Facts and Figures report at http://www.alz.org/documents_custom/Facts_2011/ALZ_FL.pdf?type=interior_map&facts=undefined&facts=facts
- English Proficiency: 2007-2011 American Community Survey, Special Tabulation on Aging
- Cost of Living: Wider Opportunities for Women Elder Economic Security Standard™ Index (Elder Index) at <http://www.basiceconomicsecurity.org/EI/>



2012 Florida PSA Profiles

PSA 10

Population by Age Category		
All Ages	1,771,099	100.0%
Under 60	1,407,746	79.5%
60+	363,353	20.5%
65+	263,449	14.9%
70+	185,225	10.5%
75+	127,079	7.2%
80+	82,367	4.7%
85+	43,891	2.5%

Population by Race (60+)		
White	277,143	76.3%
Non-White	86,210	23.7%
Black	59,827	16.5%
Other Minorities	26,383	7.3%

Population by Ethnicity (60+)		
Total Hispanic	59,899	16.5%
White	46,689	12.8%
Non-White	13,210	3.6%
Total Non-Hispanic	303,454	83.5%
Total Minorities*	132,899	36.6%

Population by Gender (60+)		
Male	162,855	44.8%
Female	200,498	55.2%

Financial Status (60+, % 60+)		
Below Poverty Guideline	43,427	12.0%
Below 125% of Poverty Guideline	63,585	17.5%
Minorities Below Poverty Guideline	22,142	6.1%
Minorities Below 125% of Poverty Guideline	30,592	8.4%

Medically Underserved (65+)	
Total Medically Underserved	28,019
Medically Underserved Populations - Living in Areas Defined as Having Medically Underserved Populations	28,019
Medically Underserved Areas - Living in Medically Underserved Areas	0

Living Situation (60+)	
Living Alone	100,766

Grandparents (60+)	
Total 60+ Living With Own Grandchildren (Under Age 18)	24,713
Grandparent Responsible for Own Grandchildren (Under Age 18)	5,496
Grandparent Not Responsible for Own Grandchildren (Under Age 18)	19,212
60+ Not Living With Own Grandchildren (Under Age 18)	332,764

Skilled Nursing Facility Utilization	
SNF Beds	4,552
Community Beds	4,229
Sheltered Beds	167
Veterans Administration Beds	120
Other Beds	36
SNFs With Beds	36
Community Beds	32
Sheltered Beds	2
Veterans Administration Beds	1
Other Beds	1
SNFs With Community Beds	32
Community Bed Days	1,547,814
Community Patient Days	1,278,204
Medicaid Patient Days	796,179
Occupancy Rate	82.6%
Percent Medicaid	62.3%

Adult Day Care	
Facilities	17
Capacity	1,155

Adult Family Care Homes	
Homes	21
Beds	102

Home Health Agencies	
Agencies	253
Medicaid Certified Agencies	62
Medicare Certified Agencies	151

Homemaker & Companion Service Companies	
Companies	181

Ambulatory Surgical Centers	
Facilities	25
Operating Rooms	79
Recovery Beds	266

*Total Minorities = (60+ Population) – (White Non-Hispanic 60+)



2012 Florida PSA Profiles

PSA 10 (Continued)

Rural Designation	
Rural (Yes/No)	0

Assisted Living Facilities	
Total Beds	7,563
OSS Beds**	1,390
Non-OSS Beds	6,173
Total Facilities	270
Facilities With ECC License***	23
Facilities With LMH License****	47
Facilities With LNS License*****	41

Hospitals	
Hospitals	24
Hospitals With Skilled Nursing Units	0
Hospital Beds	6,548
Skilled Nursing Unit Beds	0

Medical Professionals	
Medical Doctors	
Licensed	4,458
Limited License	3
Critical Need Area License	19
Restricted	0
Medical Faculty Certificate	1
Public Health Certificate	0
Specialties	
Licensed Podiatric Physicians	208
Licensed Osteopathic Physicians	688
Licensed Chiropractic Physicians	672
Registered Nurses	
Licensed Registered Nurses	21,207

Driver's License	
Drivers With Florida Driver's License - All Ages	1,400,789
Drivers With Florida Driver's License - Age 60+	311,873
Percent of Drivers With Florida Driver's License - Age 60+	22.3%

Food Stamps (60+)	
Participants (60+)	39,701
Potentially Eligible	63,585
Food Stamp Participation Rate (60+)	62.4%

Registered Voters	
Registered to Vote in Florida - All Ages	1,151,519
Registered to Vote in Florida - Age 60+	340,964
Percent of Population Registered to Vote in Florida - Age 60+	29.6%

Households With Cost Burden Above 30% and Income Below 50% Area Median Income (65+) (2010)	
Elder Households	168,164
Percent of All Households	22.1%

Median Household Income (All Ages)	
2007-2011	\$51,782

Medicaid & Medicare Eligibility	
Medicaid Eligible - All Ages	382,472
Medicaid Eligible - 60+	53,101
Dual Eligible - All Ages	60,369
Dual Eligible - 60+	45,066

Veterans	
Total	88,171
Age 45-64	33,688
Age 65-84	30,315
Age 85+	7,917

Disability Status (60+)	
With One Type of Disability*****	50,386
Hearing	38,959
Vision	23,485
Cognitive	33,624
Ambulatory	79,270
Self-Care	28,354
Independent Living	52,289
With Two or More Disabilities	66,085
With No Disabilities	250,421
Probable Alzheimer's Cases*****	35,005

English Proficiency (60+)	
With Limited English Proficiency	39,432

** OSS beds: Optional State Supplementation beds

*** ECC License: Extended Congregate Care License

****LMH License: Limited Mental Health License

*****LNS License: Limited Nursing Services License

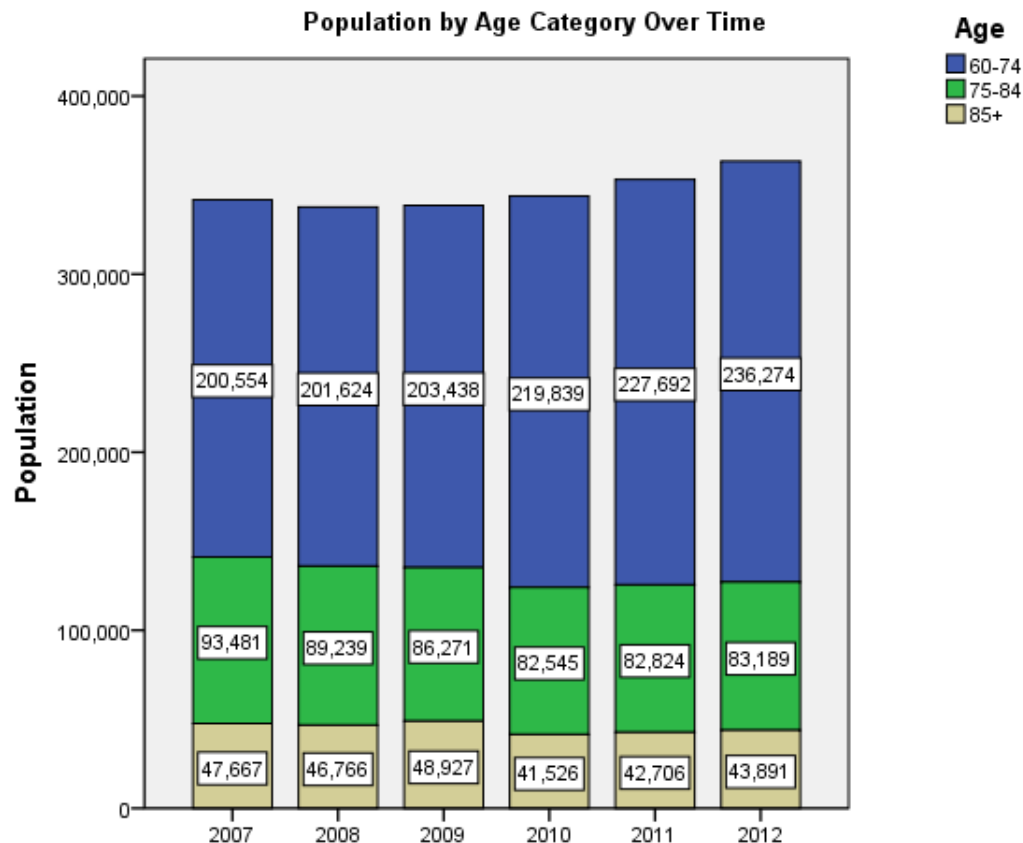
*****With One Type of Disability: 65+ people who have only one type of disability

***** Probable Alzheimer's Cases = (65-74 Population x 0.0136) + (75-84 Population x 0.1822) + (85+population x 0.4098)

2012 Florida PSA Profiles

PSA 10 (Continued)

Cost of Living	
	Annual Expenses*
Single Elders	
Owner without Mortgage	\$17,304
Renter, one bedroom	\$23,628
Owner with Mortgage	\$26,580
Elder Couple	
Owner without Mortgage	\$24,840
Renter, one bedroom	\$31,164
Owner with Mortgage	\$34,116
* Annual expenses include: housing, including utilities, taxes, insurance; food; transportation; health care, based on good health; and miscellaneous.	
Note: Wider Opportunities for Women Elder Economic Security Standard™ Index (Elder Index) measures the incomes workers and retired elders need to achieve economic security. Data as of March 2013.	





2012 Florida PSA Profiles

PSA 10 (Continued)

Sources

- Population: Florida Population by County, Age, Race, Ethnicity and Gender provided by Florida Legislature, Office of Economic and Demographic Research
- Financial Status & Living Situation: Department of Elder Affairs calculations based on Florida Population data and 2007-2011 American Community Survey
- Medically Underserved Population: Florida Department of Health
- Grandparents: Department of Elder Affairs calculations based on Florida Population data and 2007-2011 American Community Survey, Special Tabulation on Aging
- Skilled Nursing Facility Utilization, Adult Day Care, Adult Family Care Home, Ambulatory Surgical Centers, Assisted Living Facilities, Home Health Agencies, Homemakers & Companion Service Companies, Hospitals: Florida Agency for Health Care Administration
- Rural Designation: Based on the definition of Rural Designation by Rural Economic Development Initiative
- Medical Professionals: Florida Department of Health
- Driver's License: Florida Department of Highway Safety & Motor Vehicles
- Food Stamps: Florida Department of Children and Families
- Registered Voters (Data as of 2/28/2013) : Florida Department of State
- Households with Cost Burden Above 30% and income below 50% Area Median Income: The Shimberg Center for Housing Studies
- Median Household Incomes: U.S. Census Bureau: State and County QuickFacts
- Medicaid & Medicare Eligibility and Medicaid Eligibility: Florida Agency for Health Care Administration
- Veterans Demographics: Florida Department of Veterans' Affairs
- Disability Status: Department of Elder Affairs calculations based on Florida Population data and 2009-2011 American Community Survey Data
- DOEA Calculation based on the 2012 Population and Alzheimer's by Age in 2011 Alzheimer's Disease Facts and Figures report at http://www.alz.org/documents_custom/Facts_2011/ALZ_FL.pdf?type=interior_map&facts=undefined&facts=facts
- English Proficiency: 2007-2011 American Community Survey, Special Tabulation on Aging
- Cost of Living: Wider Opportunities for Women Elder Economic Security Standard™ Index (Elder Index) at <http://www.basiceconomicsecurity.org/EI/>

2012 Florida PSA Profiles

PSA 11

Population by Age Category		
All Ages	2,624,187	100.0%
Under 60	2,103,467	80.2%
60+	520,720	19.8%
65+	383,167	14.6%
70+	271,097	10.3%
75+	179,016	6.8%
80+	106,925	4.1%
85+	50,545	1.9%

Population by Race (60+)		
White	408,934	78.5%
Non-White	111,786	21.5%
Black	76,593	14.7%
Other Minorities	35,193	6.8%

Population by Ethnicity (60+)		
Total Hispanic	335,311	64.4%
White	301,183	57.8%
Non-White	34,128	6.6%
Total Non-Hispanic	185,409	35.6%
Total Minorities*	412,969	79.3%

Population by Gender (60+)		
Male	228,474	43.9%
Female	292,246	56.1%

Financial Status (60+, % 60+)		
Below Poverty Guideline	100,750	19.3%
Below 125% of Poverty Guideline	140,421	27.0%
Minorities Below Poverty Guideline	91,031	17.5%
Minorities Below 125% of Poverty Guideline	125,504	24.1%

Medically Underserved (65+)	
Total Medically Underserved	126,846
Medically Underserved Populations - Living in Areas Defined as Having Medically Underserved Populations	113,359
Medically Underserved Areas - Living in Medically Underserved Areas	13,487

Living Situation (60+)	
Living Alone	103,820

Grandparents (60+)	
Total 60+ Living With Own Grandchildren (Under Age 18)	50,861
Grandparent Responsible for Own Grandchildren (Under Age 18)	9,120
Grandparent Not Responsible for Own Grandchildren (Under Age 18)	41,746
60+ Not Living With Own Grandchildren (Under Age 18)	457,268

Skilled Nursing Facility Utilization	
SNF Beds	8,598
Community Beds	8,548
Sheltered Beds	50
Veterans Administration Beds	0
Other Beds	0
SNFs With Beds	57
Community Beds	55
Sheltered Beds	2
Veterans Administration Beds	0
Other Beds	0
SNFs With Community Beds	55
Community Bed Days	3,060,628
Community Patient Days	2,665,702
Medicaid Patient Days	1,709,272
Occupancy Rate	87.1%
Percent Medicaid	64.1%

Adult Day Care	
Facilities	97
Capacity	5,425

Adult Family Care Homes	
Homes	21
Beds	96

Home Health Agencies	
Agencies	735
Medicaid Certified Agencies	252
Medicare Certified Agencies	657

Homemaker & Companion Service Companies	
Companies	230

Ambulatory Surgical Centers	
Facilities	28
Operating Rooms	81
Recovery Beds	243

*Total Minorities = (60+ Population) – (White Non-Hispanic 60+)

2012 Florida PSA Profiles

PSA 11 (Continued)

Rural Designation	
Rural (Yes/No)	0

Assisted Living Facilities	
Total Beds	10,092
OSS Beds**	8,439
Non-OSS Beds	1,653
Total Facilities	945
Facilities With ECC License***	63
Facilities With LMH License****	709
Facilities With LNS License*****	522

Hospitals	
Hospitals	38
Hospitals With Skilled Nursing Units	2
Hospital Beds	9,969
Skilled Nursing Unit Beds	37

Medical Professionals	
Medical Doctors	
Licensed	7,300
Limited License	0
Critical Need Area License	50
Restricted	0
Medical Faculty Certificate	21
Public Health Certificate	2
Specialties	
Licensed Podiatric Physicians	219
Licensed Osteopathic Physicians	430
Licensed Chiropractic Physicians	399
Registered Nurses	
Licensed Registered Nurses	20,544

Driver's License	
Drivers With Florida Driver's License - All Ages	1,933,647
Drivers With Florida Driver's License - Age 60+	404,951
Percent of Drivers With Florida Driver's License - Age 60+	20.9%

Food Stamps (60+)	
Participants (60+)	152,332
Potentially Eligible	140,421
Food Stamp Participation Rate (60+)	108.5%

Registered Voters	
Registered to Vote in Florida - All Ages	1,327,824
Registered to Vote in Florida - Age 60+	417,924
Percent of Population Registered to Vote in Florida - Age 60+	31.5%

Households With Cost Burden Above 30% and Income Below 50% Area Median Income (65+) (2010)	
Elder Households	206,020
Percent of All Households	26.9%

Median Household Income (All Ages)	
2007-2011	\$58,754

Medicaid & Medicare Eligibility	
Medicaid Eligible - All Ages	630,073
Medicaid Eligible - 60+	176,271
Dual Eligible - All Ages	177,628
Dual Eligible - 60+	153,685

Veterans	
Total	71,578
Age 45-64	28,880
Age 65-84	20,165
Age 85+	3,681

Disability Status (60+)	
With One Type of Disability*****	64,494
Hearing	47,007
Vision	35,797
Cognitive	62,026
Ambulatory	111,466
Self-Care	49,693
Independent Living	81,916
With Two or More Disabilities	99,672
With No Disabilities	365,221
Probable Alzheimer's Cases*****	46,908

English Proficiency (60+)	
With Limited English Proficiency	212,919

** OSS beds: Optional State Supplementation beds

*** ECC License: Extended Congregate Care License

****LMH License: Limited Mental Health License

*****LNS License: Limited Nursing Services License

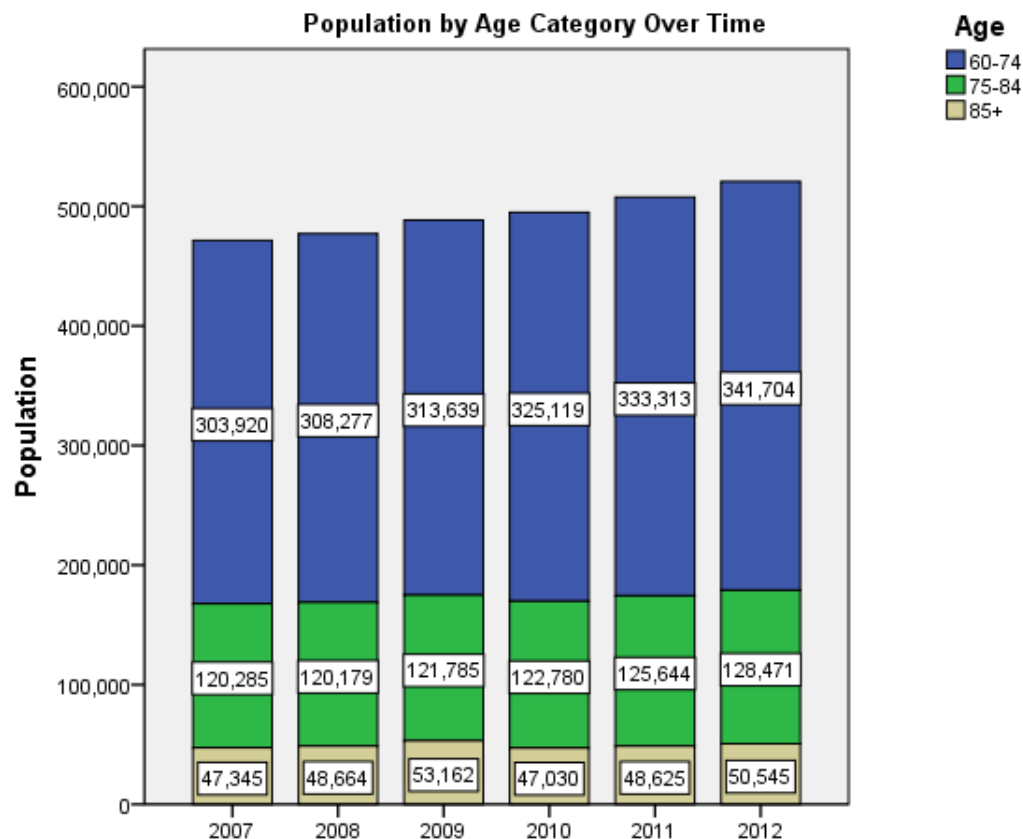
*****With One Type of Disability: 65+ people who have only one type of disability

***** Probable Alzheimer's Cases = (65-74 Population x 0.0136) + (75-84 Population x 0.1822) + (85+population x 0.4098)

2012 Florida PSA Profiles

PSA 11 (Continued)

Cost of Living	
	Annual Expenses*
Single Elders	
Owner without Mortgage	\$19,944
Renter, one bedroom	\$25,368
Owner with Mortgage	\$33,228
Elder Couple	
Owner without Mortgage	\$29,364
Renter, one bedroom	\$34,788
Owner with Mortgage	\$42,648
* Annual expenses include: housing, including utilities, taxes, insurance; food; transportation; health care, based on good health; and miscellaneous.	
Note: Wider Opportunities for Women Elder Economic Security Standard™ Index (Elder Index) measures the incomes workers and retired elders need to achieve economic security. Data as of March 2013.	





2012 Florida PSA Profiles

PSA 11 (Continued)

Sources

- Population: Florida Population by County, Age, Race, Ethnicity and Gender provided by Florida Legislature, Office of Economic and Demographic Research
- Financial Status & Living Situation: Department of Elder Affairs calculations based on Florida Population data and 2007-2011 American Community Survey
- Medically Underserved Population: Florida Department of Health
- Grandparents: Department of Elder Affairs calculations based on Florida Population data and 2007-2011 American Community Survey, Special Tabulation on Aging
- Skilled Nursing Facility Utilization, Adult Day Care, Adult Family Care Home, Ambulatory Surgical Centers, Assisted Living Facilities, Home Health Agencies, Homemakers & Companion Service Companies, Hospitals: Florida Agency for Health Care Administration
- Rural Designation: Based on the definition of Rural Designation by Rural Economic Development Initiative
- Medical Professionals: Florida Department of Health
- Driver's License: Florida Department of Highway Safety & Motor Vehicles
- Food Stamps: Florida Department of Children and Families
- Registered Voters (Data as of 2/28/2013) : Florida Department of State
- Households with Cost Burden Above 30% and income below 50% Area Median Income: The Shimberg Center for Housing Studies
- Median Household Incomes: U.S. Census Bureau: State and County QuickFacts
- Medicaid & Medicare Eligibility and Medicaid Eligibility: Florida Agency for Health Care Administration
- Veterans Demographics: Florida Department of Veterans' Affairs
- Disability Status: Department of Elder Affairs calculations based on Florida Population data and 2009-2011 American Community Survey Data
- DOEA Calculation based on the 2012 Population and Alzheimer's by Age in 2011 Alzheimer's Disease Facts and Figures report at http://www.alz.org/documents_custom/Facts_2011/ALZ_FL.pdf?type=interior_map&facts=undefined&facts=facts
- English Proficiency: 2007-2011 American Community Survey, Special Tabulation on Aging
- Cost of Living: Wider Opportunities for Women Elder Economic Security Standard™ Index (Elder Index) at <http://www.basiceconomicsecurity.org/EL/>

2012 Florida State Profile

Florida

Population by Age Category		
All Ages	18,905,048	100.0%
Under 60	14,502,087	76.7%
60+	4,572,347	24.2%
65+	3,400,781	18.0%
70+	2,384,391	12.6%
75+	1,574,698	8.3%
80+	953,908	5.0%
85+	459,136	2.4%

Population by Race (60+)		
White	3,936,152	86.1%
Non-White	636,195	13.9%
Black	413,328	9.0%
Other Minorities	222,867	4.9%

Population by Ethnicity (60+)		
Total Hispanic	637,099	13.9%
White	508,726	11.1%
Non-White	128,373	2.8%
Total Non-Hispanic	3,935,248	86.1%
Total Minorities*	1,144,921	25.0%

Population by Gender (60+)		
Male	2,075,078	45.4%
Female	2,497,269	54.6%

Financial Status (60+, % 60+)		
Below Poverty Guideline	460,130	10.1%
Below 125% of Poverty Guideline	681,387	14.9%
Minorities Below Poverty Guideline	213,879	4.7%
Minorities Below 125% of Poverty Guideline	298,525	6.5%

Medically Underserved (65+)	
Total Medically Underserved	840,516
Medically Underserved Populations - Living in Areas Defined as Having Medically Underserved Populations	681,069
Medically Underserved Areas - Living in Medically Underserved Areas	159,447

Living Situation (60+)	
Living Alone	1,056,016

Grandparents (60+)	
Total 60+ Living With Own Grandchildren (Under Age 18)	229,330
Grandparent Responsible for Own Grandchildren (Under Age 18)	63,437
Grandparent Not Responsible for Own Grandchildren (Under Age 18)	165,849
60+ Not Living With Own Grandchildren (Under Age 18)	4,249,721

Skilled Nursing Facility Utilization	
SNF Beds	83,020
Community Beds	79,715
Sheltered Beds	2,520
Veterans Administration Beds	720
Other Beds	65
SNFs With Beds	742
Community Beds	654
Sheltered Beds	80
Veterans Administration Beds	6
Other Beds	2
SNFs With Community Beds	654
Community Bed Days	29,153,125
Community Patient Days	25,376,508
Medicaid Patient Days	15,726,251
Occupancy Rate	87.0%
Percent Medicaid	62.0%

Adult Day Care	
Facilities	234
Capacity	13,079

Adult Family Care Homes	
Homes	338
Beds	1,523

Home Health Agencies	
Agencies	2,270
Medicaid Certified Agencies	528
Medicare Certified Agencies	1,586

Homemaker & Companion Service Companies	
Companies	1,746

Ambulatory Surgical Centers	
Facilities	421
Operating Rooms	1,105
Recovery Beds	3,183

*Total Minorities = (60+ Population) – (White Non-Hispanic 60+)

2012 Florida State Profile

Florida (Continued)

Rural Designation	
Rural (Yes/No)	0

Assisted Living Facilities	
Total Beds	72,909
OSS Beds**	20,288
Non-OSS Beds	52,621
Total Facilities	2,779
Facilities With ECC License***	341
Facilities With LMH License****	1,041
Facilities With LNS License*****	1,013

Hospitals	
Hospitals	293
Hospitals With Skilled Nursing Units	11
Hospital Beds	62,606
Skilled Nursing Unit Beds	387

Medical Professionals	
Medical Doctors	
Licensed	45,738
Limited License	164
Critical Need Area License	247
Restricted	0
Medical Faculty Certificate	40
Public Health Certificate	3
Specialties	
Licensed Podiatric Physicians	1,355
Licensed Osteopathic Physicians	4,609
Licensed Chiropractic Physicians	4,966
Registered Nurses	
Licensed Registered Nurses	206,522

Driver's License	
Drivers With Florida Driver's License - All Ages	14,998,098
Drivers With Florida Driver's License - Age 60+	4,127,862
Percent of Drivers With Florida Driver's License - Age 60+	27.5%

Food Stamps (60+)	
Participants (60+)	426,483
Potentially Eligible	681,387
Food Stamp Participation Rate (60+)	62.6%

Registered Voters	
Registered to Vote in Florida - All Ages	11,938,183
Registered to Vote in Florida - Age 60+	4,113,344
Percent of Population Registered to Vote in Florida - Age 60+	34.5%

Households With Cost Burden Above 30% and Income Below 50% Area Median Income (65+) (2010)	
Elder Households	2,095,443
Percent of All Households	16.5%

Median Household Income (All Ages)	
2007-2011	\$47,901

Medicaid & Medicare Eligibility	
Medicaid Eligible - All Ages	3,578,443
Medicaid Eligible - 60+	562,346
Dual Eligible - All Ages	693,189
Dual Eligible - 60+	493,387

Veterans	
Total	1,543,496
Age 45-64	564,760
Age 65-84	577,986
Age 85+	119,523

Disability Status (60+)	
With One Type of Disability*****	645,737
Hearing	528,202
Vision	248,832
Cognitive	369,938
Ambulatory	896,348
Self-Care	309,919
Independent Living	564,309
With Two or More Disabilities	737,355
With No Disabilities	3,191,734
Probable Alzheimer's Cases*****	416,341

English Proficiency (60+)	
With Limited English Proficiency	374,954

** OSS beds: Optional State Supplementation beds

*** ECC License: Extended Congregate Care License

****LMH License: Limited Mental Health License

*****LNS License: Limited Nursing Services License

*****With One Type of Disability: 65+ people who have only one type of disability

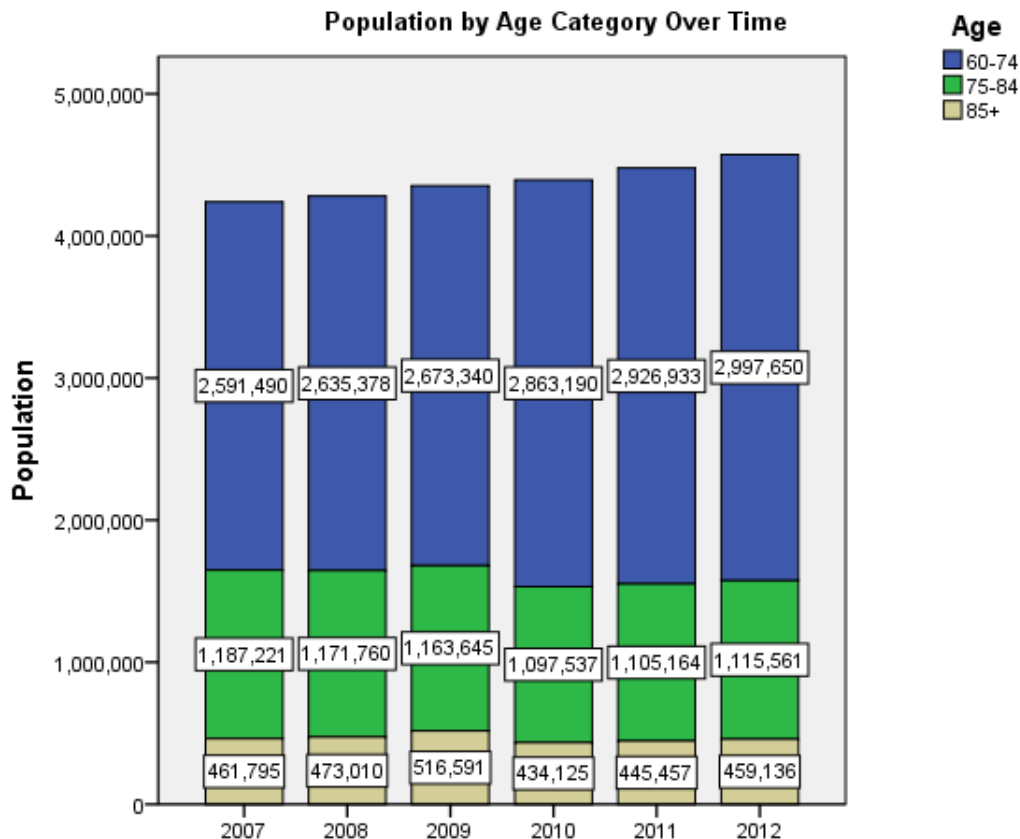
***** Probable Alzheimer's Cases = (65-74 Population x 0.0136) + (75-84 Population x 0.1822) + (85+population x 0.4098)

2012 Florida State Profile

Florida (Continued)

Cost of Living	
	Annual Expenses*
Single Elders	
Owner without Mortgage	\$18,984
Renter, one bedroom	\$23,724
Owner with Mortgage	\$28,704
Elder Couple	
Owner without Mortgage	\$28,812
Renter, one bedroom	\$33,552
Owner with Mortgage	\$38,532
* Annual expenses include: housing, including utilities, taxes, insurance; food; transportation; health care, based on good health; and miscellaneous.	
Note: Wider Opportunities for Women Elder Economic Security Standard™ Index (Elder Index) measures the incomes workers and retired elders need to achieve economic security. Data as of March 2013.	

Useful Websites
Florida Housing Data Clearinghouse (Florida)





2012 Florida State Profile

Florida (Continued)

Sources

- Population: Florida Population by County, Age, Race, Ethnicity and Gender provided by Florida Legislature, Office of Economic and Demographic Research
- Financial Status & Living Situation: Department of Elder Affairs calculations based on Florida Population data and 2007-2011 American Community Survey
- Medically Underserved Population: Florida Department of Health
- Grandparents: Department of Elder Affairs calculations based on Florida Population data and 2007-2011 American Community Survey, Special Tabulation on Aging
- Skilled Nursing Facility Utilization, Adult Day Care, Adult Family Care Home, Ambulatory Surgical Centers, Assisted Living Facilities, Home Health Agencies, Homemakers & Companion Service Companies, Hospitals: Florida Agency for Health Care Administration
- Rural Designation: Based on the definition of Rural Designation by Rural Economic Development Initiative
- Medical Professionals: Florida Department of Health
- Driver's License: Florida Department of Highway Safety & Motor Vehicles
- Food Stamps: Florida Department of Children and Families
- Registered Voters (Data as of 2/28/2013) : Florida Department of State
- Households with Cost Burden Above 30% and income below 50% Area Median Income: The Shimberg Center for Housing Studies
- Median Household Incomes: U.S. Census Bureau: State and County QuickFacts
- Medicaid & Medicare Eligibility and Medicaid Eligibility: Florida Agency for Health Care Administration
- Veterans Demographics: Florida Department of Veterans' Affairs
- Disability Status: Department of Elder Affairs calculations based on Florida Population data and 2009-2011 American Community Survey Data
- DOEA Calculation based on the 2012 Population and Alzheimer's by Age in 2011 Alzheimer's Disease Facts and Figures report at http://www.alz.org/documents_custom/Facts_2011/ALZ_FL.pdf?type=interior_map&facts=undefined&facts=facts
- English Proficiency: 2007-2011 American Community Survey, Special Tabulation on Aging
- Cost of Living: Wider Opportunities for Women Elder Economic Security Standard™ Index (Elder Index) at <http://www.basiceconomicsecurity.org/EI/>